



# HSK Shank

DINOX NC TOTAL TOOLING SYSTEM

HSK-DHE	146
HSK-DSC/M MONO TYPE	147
HSK-NPM	148
HSK-SDC/P	149
HSK-GSK	150
HSK-NPU	151
HSK-DST	151
HSK-SLA	152
HSK-FMC	153
HSK-MD	154
HSK-DBC	155
HSK-KMB	156
HSK-SMB	156
HSK-SMH	156



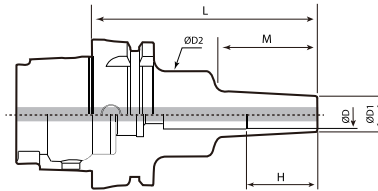
# HSK-DSC/M MONO TYPE

Shrinking chuck



DIN 69893-1 G2.5 20,000 3 $\mu$ m C Drilling Drilling Reaming Chamfering

Shank   G value   Max RPM   Run-out   Coolant System   Drilling   Drilling   Reaming   Chamfering



✘ This product does not support adjustable screw.

C Internal coolant system optional.

- For more information on the features of product, see **Page 23**. 23P ↗
- For more information on BT shank, see **Page 66**. 66P ↗
- For more information, see **Page 138** for ST shank and **Page 159** for SK shank. 138,159P ↗

HSK63A

Designation	ØD	L	ØD1	ØD2	M	H	MAX. RPM	Kg	Total Weight (Kg)
HSK63A-DSC6M-95	6	95	10	26	42	73	20,000	0.6	0.8
HSK63A-DSC8M-95	8	95	13	36	42	39	20,000	0.8	1.0
HSK63A-DSC10M-120	10	120	16	36	67	45	20,000	0.8	1.0
HSK63A-DSC12M-120	12	120	19	36	67	45	20,000	0.9	1.1
HSK63A-DSC16M-120	16	120	24	50	67	47	20,000	1.1	1.3

Feature

BT shank

S,ST shank

HSK Shank

SK shank

NT shank

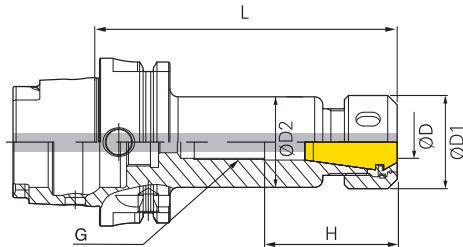
cBN/PCD

Other



# HSK-SDC/P

Collet chuck



- For more information on the product features, see **Page 28**. 28P ↗
- For more information on the applicable collet, see **Page 80**. 80P ↗
- For more information on the related parts, see **Page 87**. 87P ↗
- For more information, see **Page 72** for BT shank and **Page 160** for SK shank. 78,161P ↗

※ Use standard size of collet for oil hole type.

**C** Internal coolant system optional.

Designation	ØD	L	ØD1	ØD2	H	G	COLLET/STEP	Kg	Total Weight (Kg)
HSK63A-SDC10P-100	1.0~10.0	100	32	31	44.5	M10	GERC16/1.0	1.0	1.1
HSK63A-SDC13P-100	1.0~13.0	100	35	34	49	M7	GERC20/1.0	1.0	1.2
HSK63A-SDC16P-100	1.0~16.0	100	42	41	50	M7	GERC25/1.0	1.2	1.4
HSK63A-SDC20P-110	1.0~20.0	110	50	49	60	M7	GERC32/1.0	1.5	1.7
HSK100A-SDC16P-110	1.0~16.0	110	42	41	50	M13	GERC25/1.0	2.6	2.9
HSK100A-SDC20P-120	1.0~20.0	120	50	49	60	M10	GERC32/1.0	2.9	3.3

HSK63A, HSK100A

Feature

BT shank

S,ST shank

HSK Shank

SK shank

NT shank

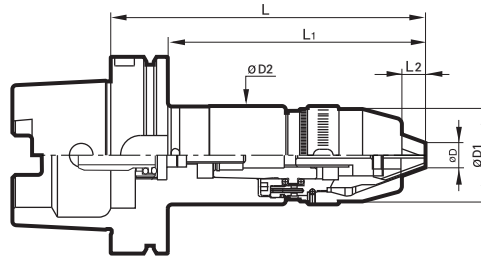
cBN/PCD

Other



# HSK-NPU

Drill chuck



**C** This product does not support internal coolant system.

• For more information on the related parts, see **Page 89.**

89P

• For more information, see **Page 88** for BT shank and **Page 163** for SK shank.

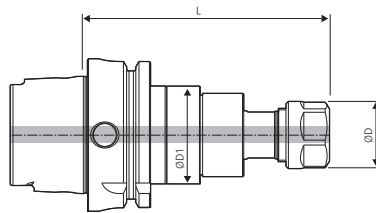
88,163P

HSK63A, HSK100A

Designation	ØD(Clamping Range)	L	ØD1	L1	L2	Kg	Total Weight (Kg)
HSK63A-NPU13-175	1~13	175	50			2.4	2.6
HSK100A-NPU13-180	1~13	180	50			3.6	4.0

# HSK-DST

High-speed synchro tapping chuck



**C** Internal coolant system is optional.

- For more information on the product features, see **Page 35.**
- For more information on TER collet, see **Page 93.**
- For more information on ER collet, see **Page 80.**
- For more information on BT shank, see **Page 92.**
- For more information, see **Page 139** for ST shank and **Page 164** for SK shank.

35P

93P

80P

92P

139,164P

HSK63A

Designation	ØD	L	ØD1	Applied Collet	Boring Range	F-	F+	Kg	Total Weight (Kg)
HSK63A-DST3-80	19	80	20	ER11	M1~M3	0.5	0.5	0.7	0.8
HSK63A-DST10-100	28	100	40.4	TER16	M3~M10	0.5	0.5	0.9	1.2
HSK63A-DST22-130	49.5	130	60	TER32	M6~M22	0.7	0.7	1.8	2.0





# HSK-FMC

Face mill arbor



Shank Coolant System Facing

Fig.1

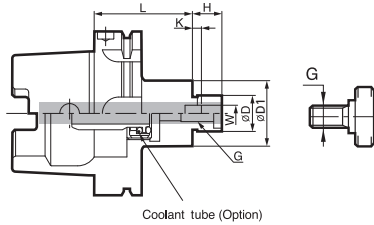


Fig.2

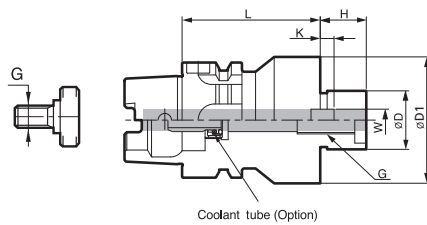
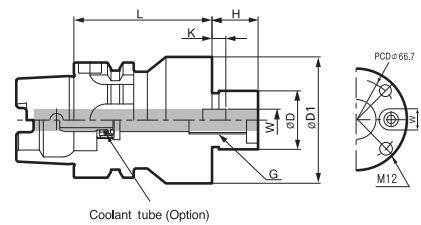


Fig.3



- ✳ The weight of face cutter is not included.
- C** Internal coolant system is optional.

- For more information on the related parts, see **Page 99**.
- For more information, see **Page 97** for BT shank and **Page 166** for SK shank.

99P 7

97,166P 7

HSK50A, HSK63A

Designation	Cutter diameter	ØD	L	ØD1	H	W	K	G	Fig.	Kg	Total Weight (Kg)
HSK50A-FMC16-40	40	16	40	38	17	8	5	M8	1	0.4	0.7
HSK50A-FMC22-50	50/63	22	50	48	19	10	5.6	M10	1	0.4	0.9
HSK63A-FMC16-50	40	16	50	38	17	8	5.0	M8	1	0.8	1.0
HSK63A-FMC22-50	50/63	22	50	48	19	10	5.6	M10	1	1.0	1.2
HSK63A-FMC27-60	80	27	60	60	21	12	6.3	M12	1	1.4	1.6
HSK63A-FMC32-60	100	32	60	78	24	14	7.0	M16	2	1.8	1.9
HSK63A-FMC40-60	125/160	40	60	89	27	15.87	8.0	M20	3	2	2.5

Feature  
BT shank  
S,ST shank  
HSK Shank  
SK shank  
MT shank  
CBN/PCD  
Other

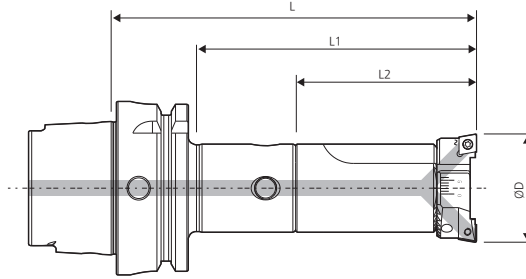


# HSK-DBC

Balance cut tool (Modular type)



Shank    Coolant System    Boring



• For more information on the related parts, see **Page 111**.

• For more information, see **Page 110** for HSK arbor and **Page 171** for SK arbor.

111P ↗

110,171P ↗

■ Internal coolant system is optional.

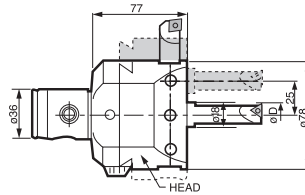
Head set model No.	Kg	Designation		Boring range		L	MAX. boring depth(L1)	L2
		Body model No.	Kg	MIN.	MAX.			
DBC2528S	0.3	HSK63A-MD25F-60	1.8	28	35	120	90	60
DBC3235S	0.4	HSK63A-MD32F-65	2.3	35	46	130	100	65
DBC4046S	0.6	HSK63A-MD40F-70	2.6	46	58	140	110	70
DBC5058S	1.1	HSK63A-MD50F-85	2.7	58	74	165	135	80
DBC6374S	2.0	HSK63A-MD63F-95	3.3	74	94	185	155	90

HSK63A

- Feature
- BT shank
- S,ST shank
- HSK Shank
- SK shank
- NT shank
- CBN/PCD
- Other

# HSK-KMB

Micro boring



1DIV =  $\varnothing 0.02\text{mm}$

- For more information on the boring range, see **Page 114**.
- For more information on the related parts, see **Page 115**.
- For more information, see **Page 100** for BT arbor and **Page 167** for SK arbor.

114P

115P

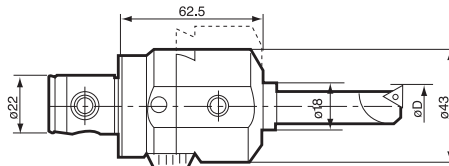
100,167P

**C** This product does not support internal coolant system.

Boring head	Bite	$\varnothing C$	L	Kg
KMB6336	BB18-□(S)	HSK□□-MD63F	77	2.2

# HSK-SMB

Small micro boring bar\_Small micro boring bar



1DIV =  $\varnothing 0.02\text{mm}$

- For more information on boring range, see **Page 114**.
- For more information on the related parts, see **Page 115**.
- For more information, see **Page 100** for BT arbor and see **Page 167** for SK arbor.

114P

115P

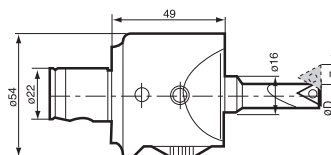
100,167P

**C** This product does not support internal coolant system.

Boring head	Bite	$\varnothing C$	L	Kg
SMB4022	BB18-□(S)	HSK□□-MD40F	62.5	0.6

# HSK-SMH

Small micro boring bar\_Small micro boring bar (precision type)



1DIV =  $\varnothing 0.01\text{mm}$

- For more information on boring range, see **Page 114**.
- For more information on the related parts, see **Page 115**.
- For more information, see **Page 100** for BT arbor and see **Page 167** for SK arbor.

114P

115P

100,167P

**C** This product does not support internal coolant system.

Boring head	Bite	$\varnothing C$	L	Kg
SMH4022	BB16-□(S)	HSK□□-MD40F	49	0.7