



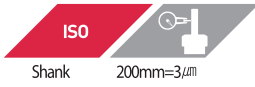
Other

DINOX NC TOTAL TOOLING SYSTEM

ROT	186
TOOL MASTER	187
TOOL MASTER LITE	188
TOOL MASTER QUADRA	189
TOOL BOY	192
NEW 3D-Taster	193
HT	194
DOP	194
DZH	195
DZP	195
DZOP	196
NTSS	197
TB	198
KCP	198
PULL STUD BOLT	199
Specification of shank	200
POSITIONING BLOCK	208

ROT

Run-out tester



Product Features

- Compatible with various shanks, provides diverse lineups
- Affordable general type compliant with ISO30~ISO50 (ISO: BT, SK, NT, CAT), and multi-type can measure the height of cutting edge and outer diameter simultaneously



Designation

ROTS	ROTM
ROTS-ISO30	ROTM-ISO30
ROTS-ISO40	ROTM-ISO40
ROTS-ISO50	ROTM-ISO50

Description

Main Components				Sold separately		
Shank	Body	Housing	Retainer	Test bar	arm	Indicator
ISO50	ROTM-BD (Multi-type) ROTS-BD (General type)	ROT-HS-ISO50	ROT-RTB-ISO50	BTN50-50-300	MB -1030-2	DIAL GAUGE (0.002mm)
ISO40		ROT-HS-ISO40	ROT-RTB-ISO40	BTN40-50-300		
ISO30	ROT-HS-ISO30	ROT-RTB-ISO30	BTN30-30-200			

Easy measurement

Measure run-out easily by inserting and turn the tool



① Insert the tool.

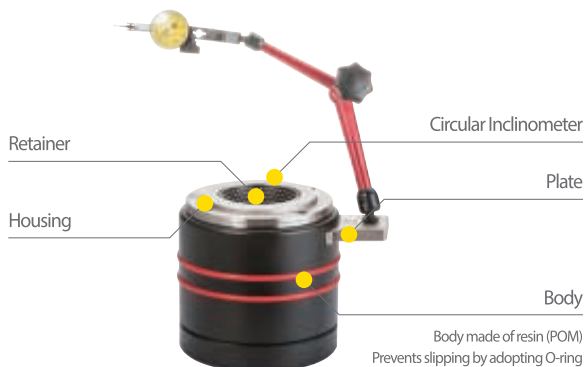
② Turn the tool and check R/O.

Convenient horizontal control (ROTM)

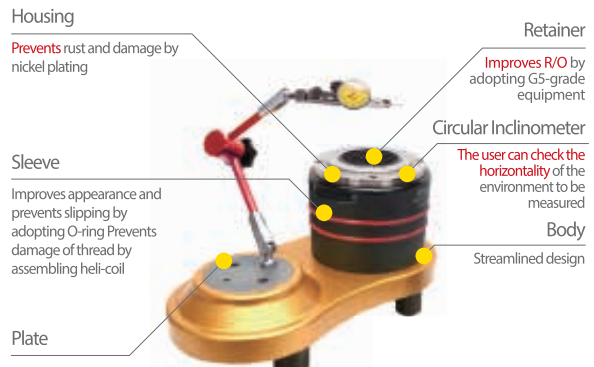


The user can check the horizontality using the installed inclinometer.

ROTS-General type (~Ø150)



ROTM-Multi-type (~Ø400)



TOOL MASTER

Made/Produced in switzerland

Tool Master is a tool presetter of EVOSET, the Swiss company with over 25 years' experience in the field.

Tool Presetter : Device to measure the adjustment value of the tool's length before installation

Advantage : Reduces cost and improves productivity by decreasing the time for setting and stopping the device.



Formula to recover investment

With Tool Master, the setting time is reduced by about 3 minutes per tool.

For example, when you have to reset 20 tools 4 times weekly, you'll have extra 240 minutes to produce in a week. It will be 192 hours in a year. You can calculate Tool Master's cost reduction effect by multiplying the time above by your hourly production cost. Based on it, you can calculate the period for recovering your investment.

If you have many devices and tools, or if you have to set tools frequently, you must consider Tool Master.

70 seconds



Tool Master 0

250 seconds



Tool Master X

TOOL MASTER's Lineups

	TOOL MASTER Lite	TOOL MASTER Quadra	TOOL MASTER 5
Version	Economical Type	General Type	For large tools
Measuring range Norm. (Ømm/Lmm) MAX. (Ømm/Lmm)	X250 / Z0. ... Z300	400 / 40 ... 400 400 / 40 ... 600	400 / 0 ... 400 1000 / 0 ... 1000
Rapid Feedrate	Manual (by hand)	Press the handle button	Using the joystick
Fine turning handle	Only to fine-tune the X axis	Use the fine-tuning handle	Using the joystick
Tool Port	Needle Bearing ISO40/50	Needle Bearing ISO40/50 or ISO40/50 KV Spindle (air suction spindle)	Needle Bearing ISO40/50 or ISO40/50 KV Spindle (air suction spindle)
Measurement type	Digital Reader	EYERAY® BUZZARD OR HAWK TIPRAY WITH DIAL INDICATOR	EYERAY® BUZZARD OR HAWK

Feature

BT shank

SJT shank

HSK shank

SK shank

NT shank

cBN/PCD

Other

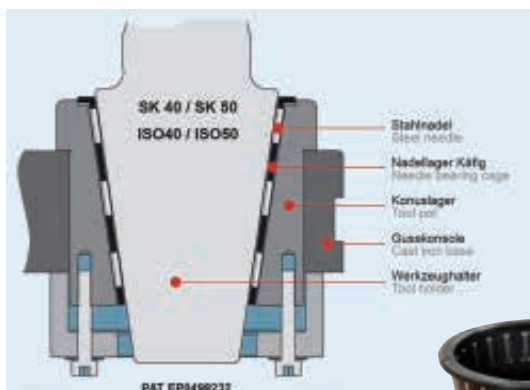
TOOL MASTER LITE

Made/Produced in Switzerland

TM Lite is an economical tool presetter with a simpler design. It can measure only simple diameter and length of tool.



Patent: Needle Bearing (Needle Bearing)



Features

- Reduces tool setting time
- Provides good quality compared to the price (economical type)
- Simple structure for easy operation
- Patented needle bearing tool port
- Digital reader (unit: 0.01mm)
- Doesn't require electricity and air.
- Weight: 23KG
- Size: 410 x 150 x h540
- AA battery

Product Name	Measurement Range	
	X-Axis (Ø)	Z-Axis (mm)
TM Lite	250	300

Features

- Prevents large measurement error because it is not affected by the surface of the tool's taper.
- Compared to ball bearing, harder to wear by contact pressure.
- Compared to the surface contact tool port, provides better center alignment.
- The gap removes oil and dust for more accurate measurement.
- Easy to clean, does not require maintenance cost.
- Easy to replace damaged needle bearing (by ordering a new one)

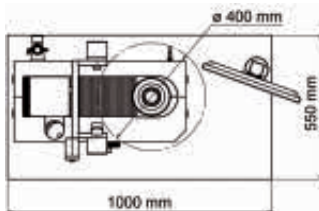
TOOL MASTER QUADRA

Made/Produced in switzerland

TM Quadra is an affordable recommended tool presetter providing various measurement methods based on the customer's need.

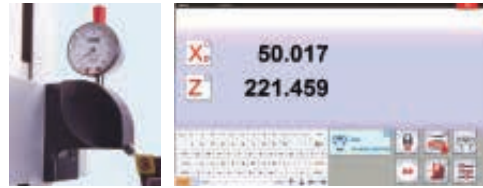


Including label printer and table
(TipRay is optional, however.)

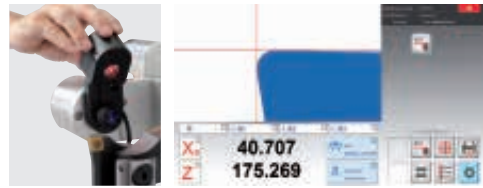


Applicable measurement methods

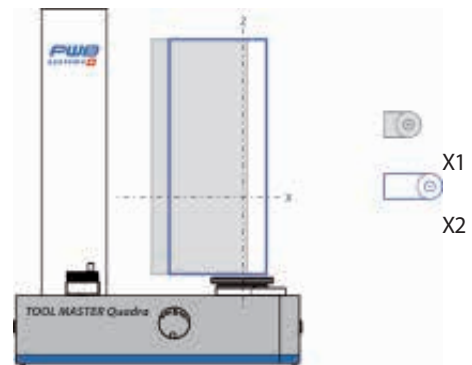
TIPRAY: Contact type
(Cemented carbide tip+Indicator)
Measures only diameter and height



AYERAY HAWK: Non-contact type (Vision)_Basic
AYERAY BUZZARD: Non-contact type (Vision)_Advanced
- Measurement of diameter/height/angle,
actual inspection, Danal measurement, etc.



Measurement Scope



Product Name	Measurement Range	
	X-Axis (∅)	Z-Axis (mm)
TM Quadra TipRay	-10~410	40~405
TM Quadra EyeRay Hawk	-10~410/600	40~405/605
TM Quadra EyeRay Buzzard	-10~410/600	40~405/605

If you want the measurement range of the Z axis
(Z40~Z605), indicate Z6 at the end of the product name.
ex) TM Quadra EyeRay Hawk Z605

Feature

BT shank

S,ST shank

HSK shank

SK shank

NT shank

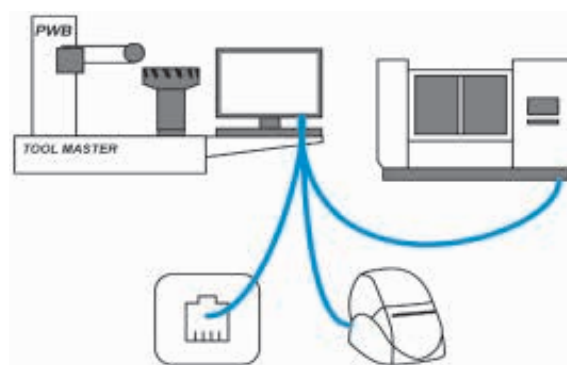
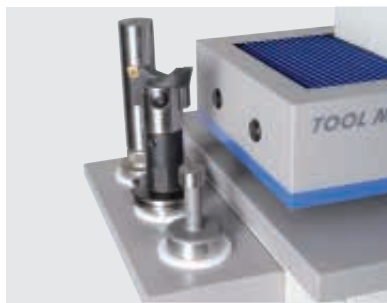
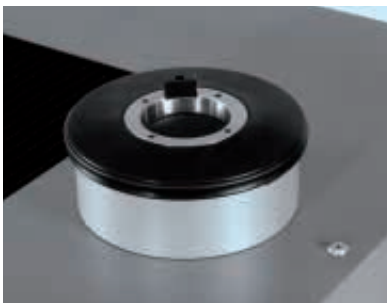
CBN/PCD

Other

Comparison of components and option by machine

Made/Produced in Switzerland

Components and option	TM Lite	TM Quadra (Basic)		TM 5
		EyeRay	Tip Ray	EyeRay
PWB needle bearing spindle	○	○	○	○
KV spindle ISO50 (air suction)	×	Option	Option	Option
- Rotation locked (air pressure)	×	Option	Option	Option
- Air suction fixed	×	Option	Option	Option
- Air bearing	×	Option	Option	Option
- HSK insert clamping tool	×	Option	Option	Option
Spindle ISO60	×	×	×	Option
Integral type PC 15.6" PC (general specification)	×	○	○	×
Integral type PC 19.0" PC (advanced specification)	×	×	×	○
Mouse	×	○	○	○
Keyboard	×	Option	Option	○
Label Printer (Dymo)	×	○	○	○
Table	×	○	Option	×
Tool Cabinet (TM5table)	×	×	×	Option
Tool Stand (3 holes)	×	Option	Option	×
Plain A4 Paper Printer Stand	×	Option	Option	×
Table Extension Tray(PC location)	×	Option	Option	×
Basic Front LED Light	×	○	×	○
Data Transmission	×	Option	Option	Option
Data transmission via ID CHIP	×	Option	Option	Option
Max. measurable tool weight	20Kg	50kg		80kg
Voltage 90-264 VAC50/60 HZ	Unnecessary	Necessary		
Air 4~6 Bar + Ø6 Air Hose	Unnecessary	Necessary		



ADAPTER

Made/Produced in switzerland



Reduction ISO50 / 40 : ISO available for ISO 10 / 15 / 20 / 25 / 30 / 35 / 40 / 45 / 50

TOOL MASTER Quadra

TOOL MASTER 5



Reduction ISO50 / 40 : HSK (Form A to F) available for HSK 25 / 32 / 40 / 50 / 63 / 80 / 100 / 125

TOOL MASTER Quadra

TOOL MASTER 5



Reduction ISO50 / 40 : VDI with clamp lever available for VDI 16 / 20 / 25 / 30 / 40 / 50 / 60

TOOL MASTER Quadra

TOOL MASTER 5



Reduction ISO50 / 40 : VDI with index (4x90°) available for VDI 16 / 20 / 25 / 30 / 40 / 50 / 60 / 80

TOOL MASTER Quadra

TOOL MASTER 5



Reduction ISO50 : Capto 'easy' available for Capto C3 / C4 / C5 / C6 / C8 / C10

TOOL MASTER Quadra

TOOL MASTER 5



Clamp insert K-HSK available for HSK 40 / 50 / 63 / 80 / 100

TOOL MASTER Quadra

TOOL MASTER 5



Adapter ISO60 : ISO50 with needle bearing

TOOL MASTER 5

Feature

BT shank

S/ST shank

HSK shank

SK shank

NT shank

cBN/PCD

Other

TOOL BOY MODULAR

Made/Produced in Switzerland

PWB Tool Mounting Device

Tool Boy (replacement type)



Tool Boy Lite (integral type)



Features

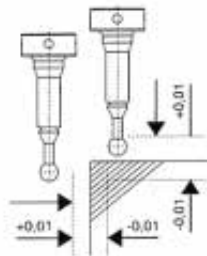
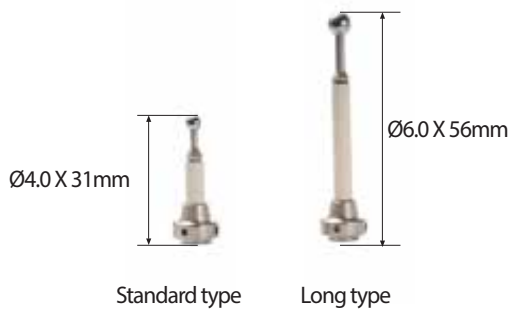
- Simple and sophisticated design
- Improved tool protection through Delrin Insert
- Compatible with all tool holders



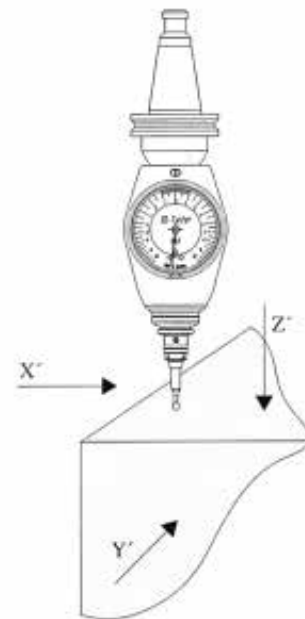
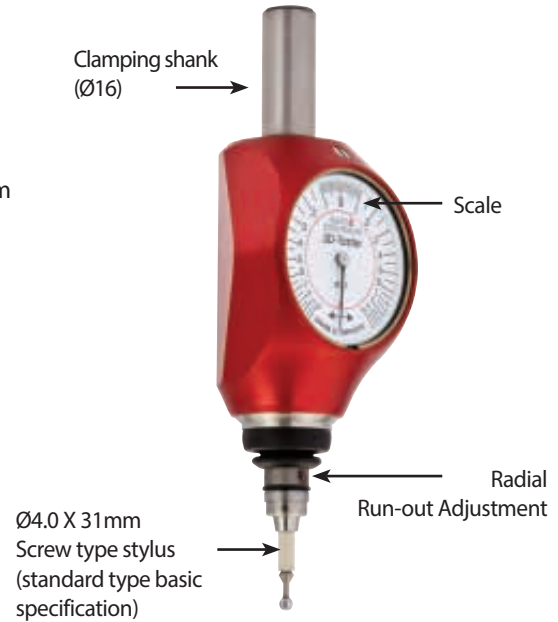
DIN 69871/DIN 2080 JIS B 6339(MAS-BT) ANSI CATV-Flange	DIN 69893 HSK-(FORM A-F)	SANDVIK Capto	DIN 69880 VDI 3425	KENAMETAL Widia/Tizit
ISO 30	HSK-A32	Capto C3	VDI 20	KM 32
ISO 35	HSK-A40	Capto C4	VDI 25	KM 40
ISO 40	HSK-A50	Capto C5	VDI 30	KM 50
ISO 45	HSK-A63	Capto C6	VDI 40	KM 63
ISO 50	HSK-A80	Capto C8	VDI 50	
	HSK-A100			

NEW 3D-Tester

- High measurement accuracy: 0.01mm
- Perfect water- and dust-proof structure
- Screw-type stylus
Prevents detachment of stylus caused by vibration and shock
- Simple and accurate radial run-out measurement
Measures radial run-out directly at the bottom of the scanning arm
- The user can perform radial and axial measurements with one graduation meter
- Standard is M8 bolt; provides washer for under M6



Axis	Allowable value
X	(+/-)0.01
Y	(+/-)0.01
Z	(+/-)0.01



Feature

BT shank

S,ST shank

HSK shank

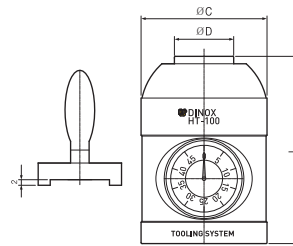
SK shank

NT shank

cBN/PCD

Other

HT HEIGHT TOUCH SETTER



Designation	ØD	ØC	L
HT - 100	32	68	100

Features

- Easy to set the length of tool from the CNC Machining center.
- Safe work without interference of tools in Height Touch Setter
- Location accuracy: $\pm 0.003\text{mm}$

DOP DINE OPTICAL EDGE FINDER



Designation	G.W.WEIGHT KGS	ACCURACY	LxWxH/UNIT:mm
DOP-20B	0.3kgs	± 0.005	158X20X10

Features

- Applied waterproof treatment, doesn't rust for a long time.
- Caution: Light laser-type edge finder is not suitable for rotation.
- If you touch, it will sound an alarm.

DZH DINE Z AXIAL HEIGHT GAUGE



Designation	HEIGHT	G.W.WEIGHT KGS	LxWxH/UNIT:mm
DZH-50	50.00±0.005mm	1.2kgs	50X63X63

Features

- To set the cutter length of MCT/Turning
- Design height: 50.00±0.005mm
- Provides wide measurement area, easy to operate
- Suppresses bounce of spring, and prevents fracture of milling cutter and bite
- Can be set fast and easily using the polished parallel plate
- High parallelization and fast and accurate use
- The user can adjust the height of adjustment stand fast using a hex key wrench
- The user can adjust the height to 0 using a hex key wrench
- Magnetic-attached type

DZP DINE Z AXIAL SETTING HEIGHT GAUGE



Designation	HEIGHT	G.W.WEIGHT KGS	LxWxH/UNIT:mm
DZP-100	±0.005	0.73kgs	100X50X50

Features

- To set the cutter length of MCT/Turning
- Design height: 100.00±0.005mm
- Provides wide measurement area, and easy to operate
- Magnetic-attached type
- Suppresses bounce of spring, prevents fracture of milling cutter and bite
- Can be set fast and easily using the polished parallel plate
- High parallelization and fast and accurate use

Feature

BT shank

S,ST shank

HSK shank

SK shank

NT shank

CBN/PCD

Other

DZOP DINE Z AXIAL P RESET GAUGE

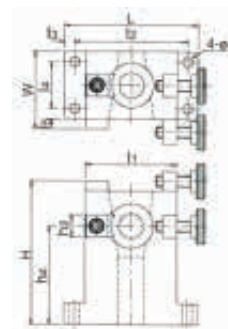


Designation	HEIGHT	G.W.WEIGHT KGS	LxWxH/UNIT:mm
DZOP-50	50	0.6kgs	50X53X53

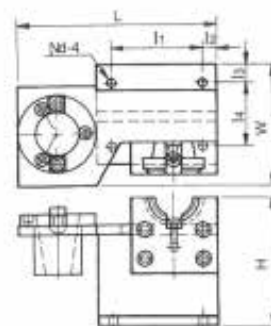
Features

- To set the cutter length of MCT/Turning
- Design height: 50.00
- Provides wide measurement area, and easy to operate
- Suppresses bounce of spring, and prevents fracture of milling cutter and bite
- Can be set easily using the polished parallel plate
- High parallelization and fast and accurate use
- Lights up when touched
- Magnetic-attached type

NTSS NEW TOOL SETTING STAND



Designation	Type	L	I1	I2	I3	I4	H	W	G.W
NTSS-30	30	95	65	80	7.5	33	100	58	1kg
NTSS-40	40	118	77	99	9.2	44	130	75	1.7kg



Designation	Type	L	I1	I2	I3	I4	H	W	G.W
NTSS-50	BT50	275	113	20	24	105	200	150	11.4kg



Designation	Type	L	I1	I2	I3	I4	H	W	G.W
NTSS-HSK63A	HSK63A	106	11	11	50	9	160	106	4.1kg

Features

- Made of aluminum alloy
- Can be used as vertical or horizontal type. BT, CAT, SK All available

Feature

BT shank

S,ST shank

HSK shank

SK shank

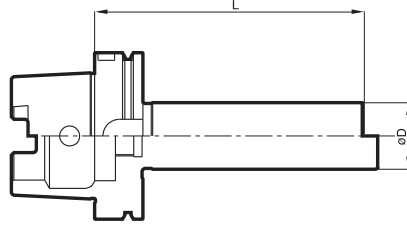
NT shank

cBN/PCD

Other

TB

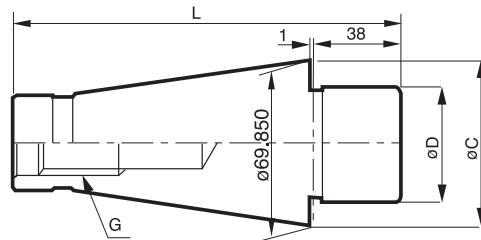
Test bar



Designation	ØD	L
HSK63A-TB40-300	40	300
HSK100A-TB40-350	40	350
BTN30-TB30-200	30	200
BTN40-TB50-300	50	300
BTN50-TB50-300	50	300

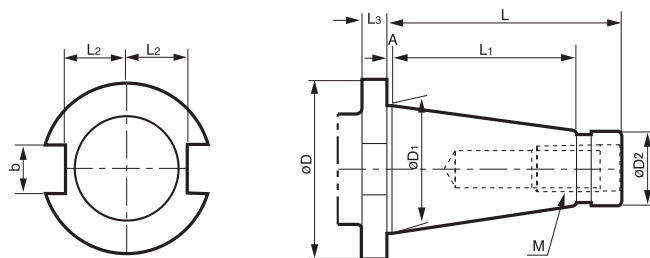
KCP

Centering plug



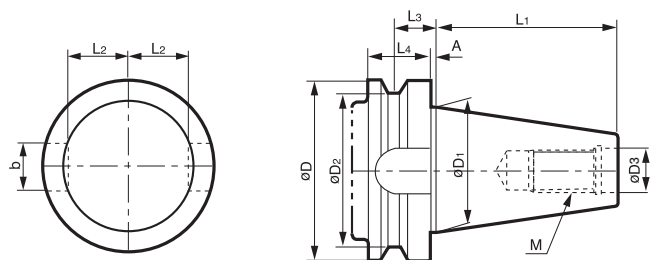
Designation	Taper	ØD	ØD	ØC	L	G
NTN 50 - KCP60	NT50	200(Over 8")	60	69.55	164.00	M24

DIN 2080, JIS B 6101, ISO 297 : 1988(E)



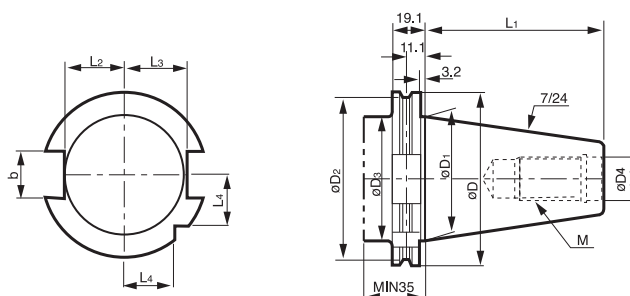
TAPER	$\varnothing D$	$\varnothing D_1$	$\varnothing D_2$	L	L1	L2	L3	A	B	M
NT30	46	31.75	17.4	68.4	48.4	16.2	10	1.6	16.1	UNC 1/2-13
NT40	63	44.45	25.3	93.4	65.4	22.5	10	1.6	16.1	UNC 5/8-11
NT50	100	69.85	39.6	126.8	101.8	35.3	14	3.2	25.7	UNC 1-8
NT60	155	107.95	60.2	206.8	161.8	60	15	3.2	25.7	UNC 1,1/4-7

BOTTLE GRIP TAPER MAS403-BT



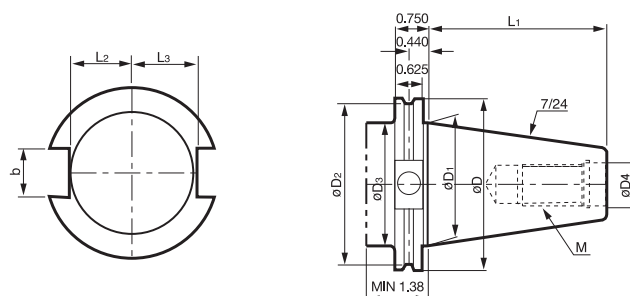
TAPER	$\varnothing D$	$\varnothing D_1$	$\varnothing D_2$	$\varnothing D_3$	L1	L2	L3	L4	A	B	M
BT30	46	31.75	38	12.5	48.4	16.3	13.6	20	2	16.1	M12 x 1.75
BT40	63	44.45	53	17	65.4	22.6	16.6	25	2	16.1	M16 x 2
BT50	100	69.85	85	25	101.8	35.4	23.2	35	3	25.7	M24 x 3
BT60	155	107.95	135	31	161.8	60.1	28.2	45	3	25.7	M30 x 3.5

DIN 69871-1 A/B, ISO 7388/1 : 1983(E)



TAPER	ØD	ØD1	ØD2	ØD3	ØD4	L1	L2	L3	L4	B	M
SK30	50	31.75	44.3	45	13	47.8	16.4	19	15	16.1	M12 x 1.75
SK40	63.55	44.45	56.25	50	17	68.4	22.8	25	18.5	16.1	M16 x 2.0
SK50	97.5	69.85	91.25	80	25	101.75	35.5	37.7	30	25.7	M24 x 3.0

CAT SHANK (ANSI/ASME B5.50-1985)



TAPER	ØD	ØD1	ØD2	ØD3	ØD4	L1	L2	L3	B	M
CAT30	1.812	1.250	1.531	1.250	0.516	1.875	0.640	0.735	0.645	UNC 0.500-13
CAT40	2.500	1.750	2.219	1.750	0.641	2.687	0.890	0.985	0.645	UNC 0.625-11
CAT50	3.875	2.750	3.594	2.750	1.031	4.000	1.390	1.485	1.020	UNC 1.000-8
CAT60	5.500	4.250	5.219	4.250	1.281	6.375	2.140	2.235	1.020	UNC 1.250-7

Feature

BT shank

S,ST shank

HSK shank

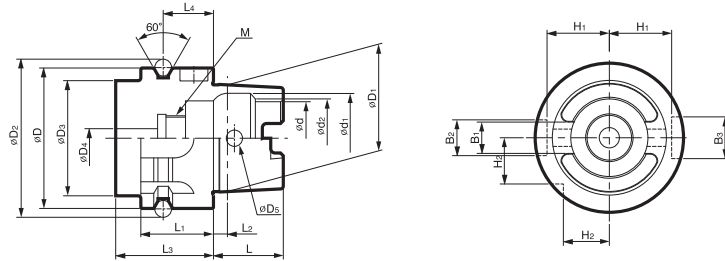
SK shank

NT shank

cBN/PCD

Other

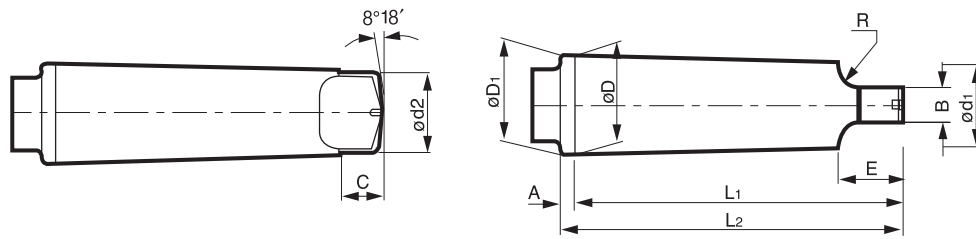
HSK SHANK DIN 69893-1, ISO 12164-1 : 2001



TAPER	ØD	ØD1	ØD3	ØD2	ØD4	ØD5	L	L1	L2	L3	L4
HSK 40A	40	30	34	45	5.0	4.6	20	20	4.0	35	16
HSK 50A	50	38	42	59.3	6.8	6.0	25	26	5.0	42	18
HSK 63A	63	48	53	72.3	8.4	7.5	32	26	6.3	42	18
HSK100A	100	75	88	109.75	12.0	12.0	50	29	10.0	45	20

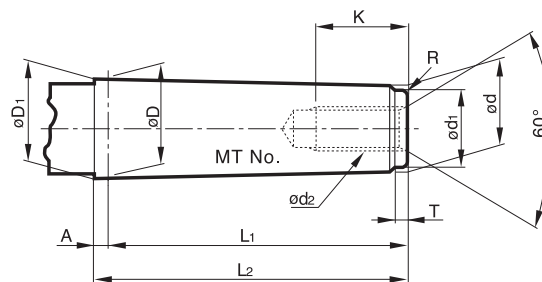
TAPER	Ød	Ød1	Ød2	B1	ØD4	ØD5	H1	H2	M
HSK 40A	21	25.5	23	8.05	11	9	17.0	12.0	M12×1.0
HSK 50A	26	32.0	29	10.54	14	12	21.0	15.5	M16×1.0
HSK 63A	34	40.0	37	12.54	18	16	26.5	20.0	M18×1.0
HSK 100A	53	63.0	58	20.02	22	20	44.0	31.5	M24×1.5

MORSE TAPER (TANG TYPE)



TAPER	Taper	Taper Angle(α)	$\varnothing D$	A	$\varnothing D1$	$\varnothing d1$	L1	L2	$\varnothing d2$	B	C	E	R	r
MT0	1/19.212	1°29'27"	9.045	3	9.201	6.104	56.5	59.5	6.0	3.9	6.5	10.5	4	1
MT1	1/20.047	1°25'43"	12.065	3.5	12.240	8.972	62.0	65.5	8.7	5.2	8.5	13.5	5	1.2
MT2	1/20.020	1°25'50"	17.780	5	18.030	14.034	75.0	80.0	13.5	6.3	10	16	6	1.6
MT3	1/19.922	1°26'16"	23.825	5	24.076	19.107	94.0	99.0	18.5	7.9	13	20	7	2
MT4	1/19.254	1°29'15"	31.267	6.5	31.605	25.164	117.5	124.0	24.5	11.9	16	24	8	2.5
MT5	1/19.002	1°30'26"	44.399	6.5	44.741	36.531	149.5	156.0	35.7	15.9	19	29	10	3
MT6	1/19.180	1°29'36"	63.348	8	63.765	52.399	210.0	218.0	51.0	19.0	27	40	13	4
MT7	1/19.231	1°29'22"	83.058	10	83.578	68.186	286.0	296.0	66.8	28.6	35	54	19	5

MORSE TAPER (SCREW TYPE)



TAPER	Taper	Taper Angle(α)	$\varnothing D$	A	$\varnothing D1$	d	L1	L2	$\varnothing d1$	d2	K	T	R
MT0	1/19.212	1°29'27"	9.045	3	9.201	6.442	50	53	6.4	-	-	4	0.2
MT1	1/20.047	1°25'43"	12.065	3.5	12.230	9.396	53.5	57	9.4	M6	16	5	0.2
MT2	1/20.020	1°25'50"	17.780	5	18.030	14.583	64	69	14.6	M10	24	5	0.2
MT3	1/19.922	1°26'16"	23.825	5	24.076	19.759	81	86	19.8	M12	28	7	0.6
MT4	1/19.254	1°29'15"	31.267	6.5	31.605	25.943	102.5	109	25.9	M16	32	9	1
MT5	1/19.002	1°30'26"	44.399	6.5	44.741	37.584	129.5	136	37.6	M20	40	9	2.5
MT6	1/19.180	1°29'36"	63.348	8	63.765	53.859	182	190	53.9	M24	50	12	4
MT7	1/19.231	1°29'22"	83.058	10	83.578	70.058	250	260	70.0	M33	80	18.5	5

Feature

BT shank

S,ST shank

HSK shank

SK shank

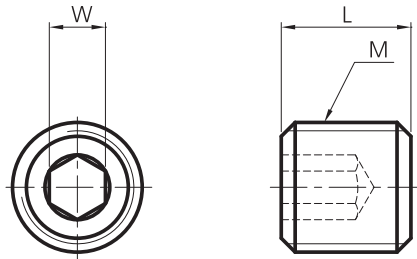
MT shank

cBN/PCD

Other

SPARE PARTS

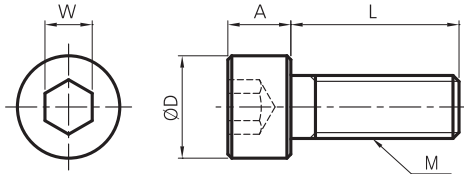
Set screw (BSA, BKA, FZ, FF, SLA, SMH)



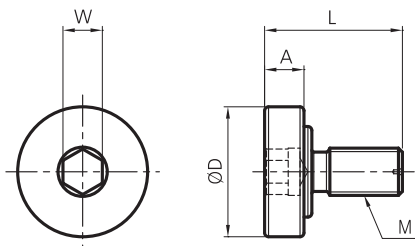
Designation	M	L	W
BTF0505	M5x0.8	5	2.5
BTF0606	M6x10	6	3
BTF0608	M6x1.0	8	3
BTF0808	M8x1.25	8	4
BTF0812	M8x1.25	12	4
BTF1010	M10x1.5	10	5
BTF1012	M10x1.5	12	5
BTF1016	M10x1.5	16	5
BTF1060	M10x1.5	60	5
BTF1212	M12x1.75	12	6
BTF1212-1.5	M12x1.5	12	6
BTF1414-1.5	M14x1.5	14	6
BTF1216	M12x1.75	16	6
BTF1220	M12x1.75	20	6
BTF1225	M12x1.75	25	6
BTF1230	M12x1.75	30	6
BTF1616	M16x2.0	16	6
BTF1616-1.5	M16x1.5	16	8
BTF1624-1.5	M16x1.5	24	8
BTF1818-1.5	M18x1.5	18	8
BTF2020	M20x2.5	20	10
BTF2020-1.5	M20x1.5	20	10

SPARE PARTS

Clamp bolt (FMA, FMC, TBC, FBC, DBC)



Designation	M	A	L	ØD	W
BX0310	M3x0.5	3	10	5.5	2.5
BX0412	M4x0.7	4	12	7	3
BX0416	M4x0.7	4	16	7	3
BX0515	M5x0.8	5	15	8.5	4
BX0516	M5x0.8	5	16	8.5	4
BX0616	M6x1.0	6	16	10	5
BX0620	M6x1.0	6	20	10	5
BX0625	M6x1.0	6	25	10	5
BX0630	M6x1.0	6	30	10	5
BX0820	M8x1.25	8	20	13	6
BX0825	M8x1.25	8	25	13	6
BX0830	M8x1.25	8	30	13	6
BX1020	M10x1.5	8	20	16	8
BX1030	M10x1.5	8	30	16	8
BX1035	M10x1.5	8	35	16	8
BX1230	M12x1.75	12	30	18	10
BX1235	M12x1.75	12	35	18	10
BX1640	M16x2.0	16	40	24	14
BX1645	M16x2.0	16	45	24	14



Designation	M	A	L	ØD	W
MBA-M8	M8x1.25	7	26	20	6
MBA-M10	M10x1.5	9	32	28	8
MBA-M12	M12x1.75	10	35	33	10
MBA-M16	M16x2.0	10	50	40	14
MBA-M20	M20x2.5	14	54	50	17
MBA-M24	M24x3.0	14	62	65	19

Feature

BT shank

S,ST shank

HSK shank

SK shank

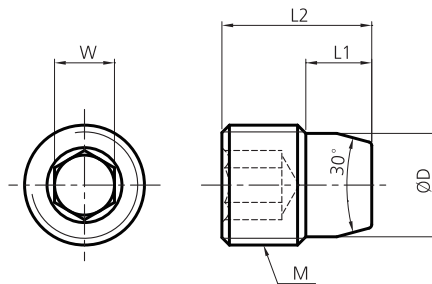
NT shank

cBN/PCD

Other

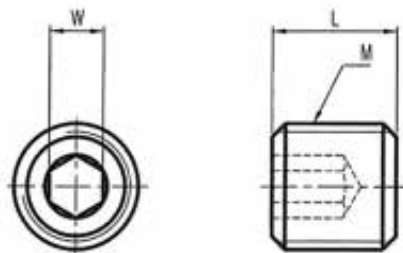
SPARE PARTS

TAPER SCREW(BASIC HOLDER) (SLA, FF, MD, EXT, RDC)



Designation	M	L1	L2	ØD	W
BTT0506F	M5x0.5	2.8	5.5	4.1	2.5
BTT0608F	M6x0.75	3.8	8	4.9	3
BTT0810F	M8x0.75	4.8	10	6.9	4
BTT1013F	M10x1.0	5.75	13	8.5	5
BTT1215F	M12x1.0	6.8	16	10.5	6
BTT1620F	M16x1.5	8.8	20	13.8	8
BTT1626F	M16x1.5	10.75	26	13.8	8
BTT1631F	M16x1.5	10.75	31	13.8	8

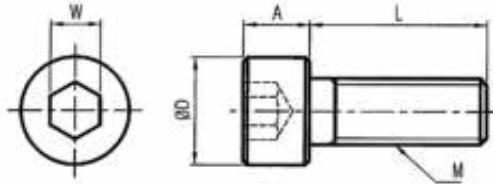
Set screw (TBC/FBC)



Designation	M	L1	W
BT0645	M6x1.0	45	3
BT0660	M6x1.0	60	3

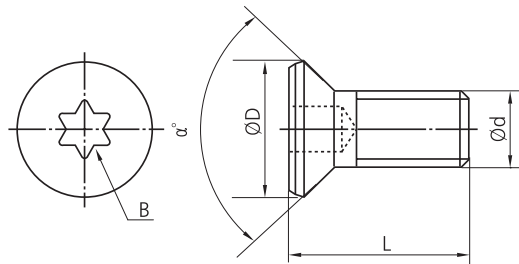
SPARE PARTS

CLAMP BOLT(FBB BITE)



Designation	M	A	L	ØD	W
BXC0304	M3x0.5	2	5	5.5	2
BXC0405	M4x0.7	2.8	6	7	2.5
BXC0506	M5x0.8	3.5	6	8.5	3
BXC0610	M6x1.0	4	10	10	4
BXC0810	M8x1.25	5	10	13	5

Insert screw



Designation	M	L	ØD	B	α°	(N·m)
BFTX0203A	2x0.4	3.0	2.7	T6	90	0.5
BFTX0204A	2x0.4	4.3	2.7	T6	90	0.5
BFTX0307A	3x0.5	6.8	4.3	T10	90	2.0
BFTX0410A	4x0.7	10.3	5.6	T15	90	3.4
BFTX02506N	2.5x0.45	5.5	3.45	T8	60	1.5

Feature

BT shank

S,ST shank

HSK shank

SK shank

NT shank

cBN/PCD

Other