



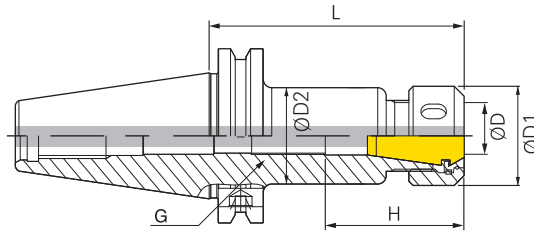
SK Shank

DINOX NC TOTAL TOOLING SYSTEM

SK-DHE	158
SK-DSC/M <small>MONO TYPE</small>	159
SK-NPM	160
SK-SDC/P	161
SK-GSK	162
SK-NPU	163
SK-DTN	163
SK-DST	164
SK-SLA	165
SK-FMC	166
SK-MD	167
SK-MTA	168
SK-FBH/B	169
SK-FBC,TBC	170
SK-DBC	171
SK-KMB	172
SK-SMB	172
SK-SMH	172

SK-SDC/P

Precision collet chuck for multi purpose machining



- For more information on the product features, see **Page 28**.
- For more information on the applicable collet, see **Page 80**.
- For more information on the related parts, see **Page 87**.
- For more information, see **Page 78** for BT shank and **Page 149** for HSK shank.

※ Use correct size of collet for coolant-through.

C Internal coolant system optional.

28P ↗

80P ↗

87P ↗

78,149P ↗

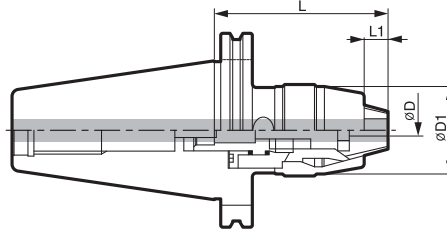
SK40

Designation	ØD	L	ØD1	ØD2	H	COLLET/STEP	G	Kg	Total Weight (Kg)
SK40-SDC10P-90	1.0~10.0	90	32	31	44.5	GERC16/1.0	M10	1.1	1.2
SK40-SDC13P-90	1.0~13.0	90	35	34	49	GERC20/1.0	M13	1.2	1.3
SK40-SDC13P-120	1.0~13.0	120	35	34	49	GERC20/1.0	M13	1.3	1.5
SK40-SDC16P-90	1.0~16.0	90	42	41	50	GERC25/1.0	M18	1.4	1.5
SK40-SDC20P-90	1.0~20.0	90	50	49	60	GERC32/1.0	M13	1.5	1.6

Feature
BT shank
S,ST shank
HSK shank
SK Shank
NT shank
cBN/PCD
Other

SK-NPU

Drill chuck



C This product does not support internal coolant system.

- For more information on the related parts, see **Page 89**.
- For more information, see **Page 88** for BT shank and **Page 151** for HSK shank.

89P

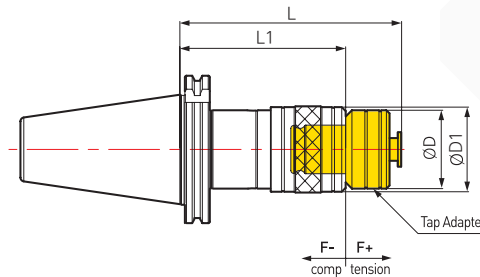
88,151P

SK40, SK50

Designation	ØD	ØD1	L	L1	Kg	Total Weight (Kg)
SK40-NPU13-105	1~13	50	105	12.5	1.6	1.8
SK50-NPU13-111	1~13	50	111	12.5	3.6	3.9

SK-DTN

Tapping holder



C This product does not support internal coolant system.

- For more information on the product features, see **Page 34**.
- For more information on the applied adapter, see **Page 91**.
- For more information, see **Page 90** for BT shank and **Page 144** for S shank.

34P

91P

90,144P

SK40, SK50

Designation	Tap Size	L	L1	ØD	ØD1	Applied Adapter	F-	F+	Kg	Total Weight (Kg)
SK40-DTN12-90	M3~M12	90	65	32	39	TCA1-M	4	10	1.0	1.2
SK40-DTN22-130	M8~M22	130	96	50	56	TCA2-M	12.5	12.5	1.6	1.8
SK50-DTN12-100	M3~M12	100	75	32	39	TCA1-M	4	10	2.9	3.2
SK50-DTN22-140	M8~M22	140	106	50	56	TCA2-M	12.5	12.5	3.5	3.9

Feature

BT shank

S,ST shank

HSK shank

SK Shank

NT shank

cBN/PCD

Other

SK-SLA

Side lock arbor



DIN69871
-1A/B

C

Shank
 Coolant System
 Milling
 Drilling

Fig.1

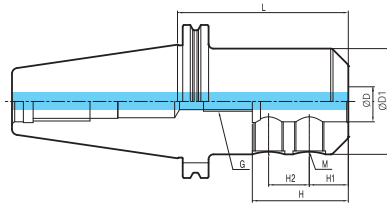
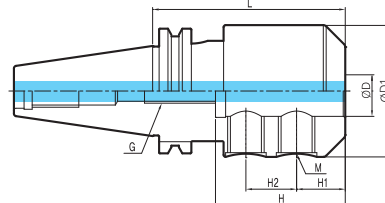


Fig.2



- For more information on the related parts, see **Page 95**.
- For more information, see **Page 94** for BT shank and **Page 152** for HSK shank.

95P ↗

94,152P ↗

C Internal coolant system installed.

SK40, SK50

Designation	ØD	L	ØD1	H	H1	H2	M	G	Fig.	Kg	Total Weight (Kg)
SK40-SLA16-75	16	75	48	49	24	-	M14	M12	-	1.4	1.6
SK40-SLA20-75	20	75	52	51	25	-	M16	M12	-	1.5	1.7
SK40-SLA25-95	25	95	65	59	24	25	M18	M12	2	2.1	2.4
SK40-SLA32-105	32	105	72	63	24	28	M20	M12	2	2.7	2.9
SK50-SLA16-90	16	90	48	49	24	-	M14	M12	-	3.3	3.5
SK50-SLA20-90	20	90	52	51	25	-	M16	M12	-	3.6	3.9
SK50-SLA25-105	25	105	65	59	24	25	M18	M12	1	4.5	4.8
SK50-SLA32-120	32	120	72	63	24	28	M20	M12	1	5.2	5.6
SK50-SLA40-120	40	120	80	73	30	32	M20	M12	1	5.5	5.9

Feature

BT shank

S,ST shank

HSK shank

SK Shank

NT shank

cBN/PCD

Other

SK-MD

Basic holder



Fig.1

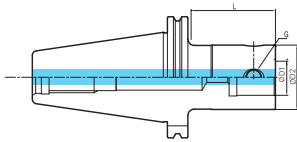


Fig.2

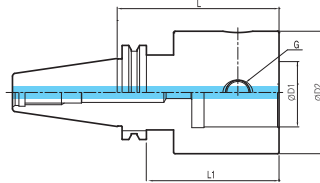
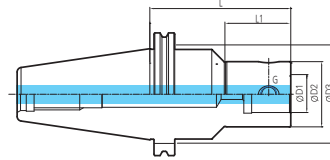


Fig.3



- For more information on the related parts, see **Page 102**.
- For more information, see **Page 100** for BT shank and **Page 154** for HSK shank.

102P ↗

100,154P ↗

C Internal coolant system installed.

	Designation	ØD1	L	ØD2	ØD3	L1	G	Fig.	Kg	Total Weight (Kg)
SK40	SK40-MD19F-80R	11	80	19	30	12	M5	3	1.0	1.2
	SK40-MD25F-80R	14	80	25	35	22	M6	3	1.1	1.3
	SK40-MD32F-115R	18	115	32	42	36	M8	3	1.5	1.7
	SK40-MD40F-60	22	60	40	-	40	M10	1	1.1	1.3
	SK40-MD40F-100	22	100	40	-	80	M10	1	1.4	1.6
	SK40-MD50F-75	28	75	50	-	55	M10	1	1.5	1.7
	SK40-MD50F-100	28	100	50	-	80	M12	1	1.8	2.0
SK40-MD63F-70	36	70	63	-	50	M16	2	1.4	1.6	
SK50	SK50-MD19F-85R	11	85	19	40	12	M5	3	3.0	3.3
	SK50-MD25F-80R	14	80	25	44	22	M6	3	3.1	3.4
	SK50-MD25F-105R	14	105	25	44	22	M6	3	3.3	3.6
	SK50-MD32F-110	18	110	32	-	87	M8	1	3.0	3.3
	SK50-MD32F-110R	18	110	32	50	36	M8	3	3.5	3.8
	SK50-MD40F-100	22	100	40	-	75	M10	1	3.2	3.5
	SK50-MD40F-145	22	145	40	-	120	M10	1	3.5	3.9
	SK50-MD40F-220R	22	220	40	60	83	M10	3	5.6	6.0
	SK50-MD50F-125R	28	125	50	65	60	M12	3	4.3	4.6
	SK50-MD50F-240R	28	240	50	65	125	M12	3	6.6	7.0
	SK50-MD63F-75	36	75	63	-	52	M16	1	3.6	3.9
	SK50-MD63F-130	36	130	63	-	107	M16	1	4.7	5.1
	SK50-MD63F-230R	36	230	63	80	149	M16	3	7.9	8.3
	SK50-MD80F-95	45	95	80	-	75	M16	1	4.8	5.1
	SK50-MD80F-150	45	150	80	-	130	M16	1	6.8	7.2
	SK50-MD90F-115	45	115	90	-	95	M16	2	6.3	6.6
	SK50-MD90F-165	45	165	90	-	145	M16	2	8.1	8.5

Feature

BT shank

S,ST shank

HSK shank

SK Shank

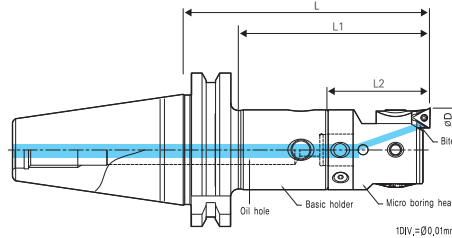
NT shank

cBN/PCD

Other

SK-FBH/B

Micro boring bar (balanced type)



- For more information on the product features, see **Page 38**.
- For more information on the related parts, see **Page 105**.
- For more information, see **Page 104** for BT shank and **Page 142** for S shank.

38P ↗

105P ↗

104,142P ↗

C Internal coolant system installed.

	Designation			Boring range		L	L1	L2	Kg (Head)	Total Weight (Kg) (Head)
	Head model No.	Bite model No.	Body model No.	MIN.	MAX.					
SK40	FBH1920B	FBB20N-□-□□	SK40-MD19F-80R	20(24)	26(30)	115.35	47.35	31.7	0.2	0.2
	FBH2526B	FBB26N-□-□□	SK40-MD25F-80R	26(32)	34(40)	120.85	62.85	37	0.2	0.2
	FBH3233B	FBB33N-□-□□	SK40-MD32F-115R	33(40)	43(50)	155.9	76.9	38	0.3	0.3
	FBH4042B	FBB42N-□-□□	SK40-MD40F-100	42(50)	54(62)	150.5	129.4	46.5	0.5	0.5
	FBH5053B	FBB53N-□-□□	SK40-MD50F-100	53(65)	70(82)	158.35	139.25	54	0.8	0.9
	FBH6368B	FBB68N-□-□□	SK40-MD63F-70	68(90)	100(122)	150.6	131.5	76	2.1	2.3
SK50	FBH6398B	FBB68N-□-□□	SK40-MD63F-70	98(120)	150(172)	170.6	151.5	96	3.6	3.8
	FBH1920B	FBB20N-□-□□	SK50-MD19F-85R	20(24)	26(30)	120.35	47.35	31.7	0.2	0.2
	FBH2526B	FBB26N-□-□□	SK50-MD25F-105R	26(32)	34(40)	145.85	62.85	37	0.2	0.2
	FBH3233B	FBB33N-□-□□	SK50-MD32F-110	33(40)	43(50)	150.9	128.8	38	0.3	0.3
	FBH4042B	FBB42N-□-□□	SK50MD40F-145	42(50)	54(62)	195.5	171.4	46.5	0.5	0.5
	FBH5053B	FBB53N-□-□□	SK50-MD50F-240R	53(65)	70(82)	298.35	183.35	54	0.8	0.9
	FBH6368B	FBB68N-□-□□	SK50-MD63F-130	68(90)	100(122)	210.6	188.5	76	2.1	2.3
	FBH6398B	FBB68N-□-□□	SK50-MD63F-130	98(120)	150(172)	230.6	211.5	96	3.6	3.8
FBH8098B	FBB68N-□-□□	SK50-MD80F-150	98(120)	150(172)	250.6	231.5	96	4.5	4.8	

- The user can adjust the depth of boring with a combination of MD extension bars. For more information, see EXT page.
- FBB Bite is largely divided into general-type FBB□□N and extended-type FBB□□N-1 and is available as FBB□□N-□-C09, T11 depending on the insert.

FBB□□N, FBB□□N-1:TPGT,TPGW0802□□L

FBB□□N-□-C:CCMT,CCGT0602□□L

FBB□□N-□-C09:CCMT,CCGT09T3□□L

FBB□□N-□-T11:TPGT1103□□L

Feature

BT shank

S,ST shank

HSK shank

SK Shank

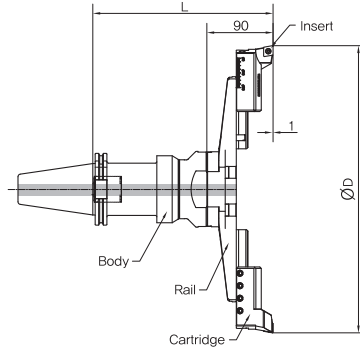
NT shank

cBN/PCD

Other

SK-FBC,TBC

Balance cut tool for rough boring



- For more information on the product features, see **Page 36**.
- For more information on the related parts, see **Page 108**.
- For more information on BT arbor, see **Page 106**.

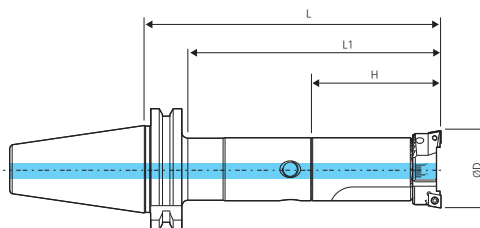


C Internal coolant system is optional.

Designation								Boring range	
Body	Kg	Rough boring(TBC)			Finishing boring(FBC)			MIN.	MAX.
		TBC HEAD SET (rail+cartridge)	L	Kg	FBC HEAD SET (rail+cartridge+balancing block)	L	Kg		
SK50-FMD50-155	7.9	TBC130S (TBR130+BCC1348)	245	3.5	FBC130S (TBR130+FCC130+FCB130)	252	3.8	130	180
SK50-FMD50-255	10.4	TBC130S (TBR130+BCC1348)	345	3.5	FBC130S (TBR130+FCC130+FCB130)	352	3.8	130	180
SK50-FMD50-155	7.9	TBC175S (TBR175+BCC1348)	245	3.9	FBC175S (TBR175+FCC130+FCB130)	252	4.1	175	225
SK50-FMD50-255	10.4	TBC175S (TBR175+BCC1348)	345	3.9	FBC175S (TBR175+FCC130+FCB130)	352	4.1	175	225
SK50-FMD50-155	7.9	TBC220S (TBR220+BCC1348)	245	4.3	FBC220S (TBR220+FCC130+FCB130)	252	4.5	220	270
SK50-FMD50-255	10.4	TBC220S (TBR220+BCC1348)	345	4.3	FBC220S (TBR220+FCC130+FCB130)	352	4.5	220	270
SK50-FMD50-155	7.9	TBC265S (TBR265+BCC1348)	245	4.5	FBC265S (TBR265+FCC130+FCB130)	252	4.6	265	315
SK50-FMD50-255	10.4	TBC265S (TBR265+BCC1348)	345	4.5	FBC265S (TBR265+FCC130+FCB130)	352	4.6	265	315
SK50-FMD50-155	7.9	TBC310S (TBR310+BCC1354)	245	5.5	FBC310S (TBR310+FCC310+FCB310)	252	5.5	310	390
SK50-FMD50-255	10.4	TBC310S (TBR310+BCC1354)	345	5.5	FBC310S (TBR310+FCC310+FCB310)	352	5.5	310	390
SK50-FMD50-155	7.9	TBC385S (TBR385+BCC1354)	245	5.8	FBC385S (TBR385+FCC310+FCB310)	252	5.8	385	465
SK50-FMD50-255	10.4	TBC385S (TBR385+BCC1354)	345	5.8	FBC385S (TBR385+FCC310+FCB310)	352	5.8	385	465
SK50-FMD50-155	7.9	TBC460S (TBR460+BCC1354)	245	12.8	FBC460S (TBR460+FCC310+FCB310)	252	12.8	460	540
SK50-FMD50-255	10.4	TBC460S (TBR460+BCC1354)	345	12.8	FBC460S (TBR460+FCC310+FCB310)	352	12.8	460	540

SK-DBC

Balance cut tool (Modular type)



※ The user can adjust the depth of boring with a combination of MD arbors and extension bars.

- For more information on the related parts, see **Page 111**.
- For more information, see **Page 110** for BT arbor and **Page 155** for HSK arbor.

C Internal coolant system installed.

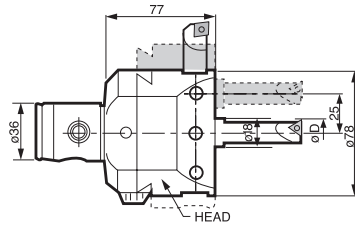
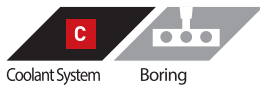
111P ↗
110,155P ↗

Designation				Boring range		L	MAX. boring depth (L1)	H
Head set model No.	Kg	Body model No.	Kg	MIN.	MAX.			
DBC2528S	0.3	SK40-MD25F-80R	1.8	28	35	130	82	60
DBC3235S	0.4	SK40-MD32F-115R	2.3	35	46	180	91	65
DBC4046S	0.6	SK40-MD40F-100R	2.6	46	58	170	130	70
DBC5058S	1.1	SK40-MD50F-100	2.7	58	74	180	158	80
DBC2528S	0.3	SK50-MD25F-105R	4.7	28	35	155	82	60
DBC3235S	0.4	SK50-MD32F-110R	5.1	35	46	175	101	65
DBC4046S	0.6	SK50-MD40F-145	5.3	46	58	215	190	70
DBC5058S	1.1	SK50-MD50F-240R	6.8	58	74	320	205	80
DBC6374S	2	SK50-MD63F-130	5.8	74	94	220	197	90
DBC8094S	3.5	SK50-MD80F-150	9.5	94	120	250	229	100
DBC120S	5.3	SK50-MD80F-150	9.5	120	175	250	229	100

Feature
BT shank
S,ST shank
HSK shank
SK Shank
NT shank
CBN/PCD
Other

SK-KMB

Micro boring



1DIV = $\varnothing 0.02\text{mm}$

- For more information on boring range, see **Page 114**.
- For more information on the related parts, see **Page 115**.
- For more information, see **Page 112** for BT arbor and **Page 156** for HSK arbor.

114P ↗

115P ↗

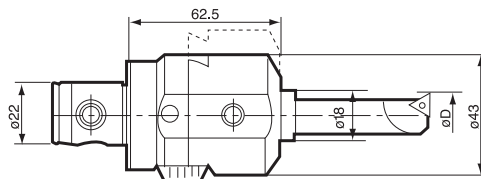
112,156P ↗

C This product does not support internal coolant system.

Boring head	Bite	Designation	L(length of head\)	Kg
KMB6336	BB18-□(S)	SK□□-MD63F	77	2.2

SK-SMB

Small micro boring bar



1DIV = $\varnothing 0.02\text{mm}$

- For more information on boring range, see **Page 114**.
- For more information on the related parts, see **Page 115**.
- For more information, see **Page 112** for BT arbor and **Page 156** for HSK arbor.

114P ↗

115P ↗

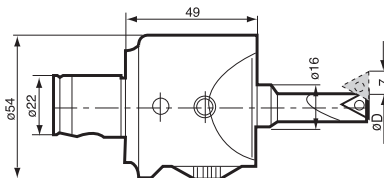
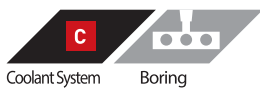
112,156P ↗

C This product does not support internal coolant system.

Boring head	Bite	Designation	L(length of head)	Kg
SMB4022	BB18-□(S)	SK□□-MD40F	62.5	0.6

SK-SMH

Small micro boring bar (precision type)



1DIV = $\varnothing 0.01\text{mm}$

- For more information on boring range, see **Page 114**.
- For more information on the related parts, see **Page 115**.
- For more information, see **Page 112** for BT arbor and **Page 156** for HSK arbor.

114P ↗

115P ↗

112,156P ↗

C This product does not support internal coolant system.

Boring head	Bite	Designation	L(length of head)	Kg
SMH4022	BB16-□(S)	SK□□-MD40F	49	0.7

