



PRÄZISIONSWERKZEUGE

## zeus® ENGRAVING TECHNOLOGY

ROLLS / DRUMS  
STAMPS  
EMBOSSING DIES  
SPECIAL ENGRAVING



The premium brand  
from Hommel+Keller

## zeus® ENGRAVING TECHNOLOGY

# MAKE YOUR MARK!

Wherever you want it. Individual and unique.

Stamping tools are essential in everyday industrial operations. Whether you stamp your product with a number, your logo or a decorative element – zeus® engraving technology will make it unmistakably yours. We develop the customized solution for your requirements. There is no limit to the diversity of possible applications.

As an essential quality criterion we offer you state-of-the-art heat and surface treatment, in addition to ultra-quality high-tech PVD coatings in our competence centre together with H+K Härte- und Oberflächentechnik GmbH and H+K Surface Technology GmbH. This allows us to manufacture products with excellent material properties and above-average stability.

The material, dimensions and quality requirements are based on your individual application.

An exemplary selection of our products is shown on the following pages.





## zeus® ENGRAVING TECHNOLOGY

# ROLLS/DRUMS

### SCRIBING ROLLS

Marking and labelling of turned parts.

### SEGMENT ROLLS

Marking and labelling of turned parts with flexibly replaceable text and symbol modules.

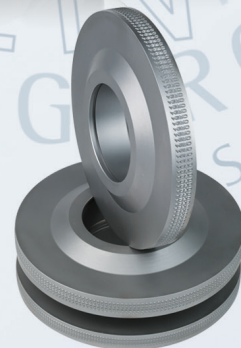
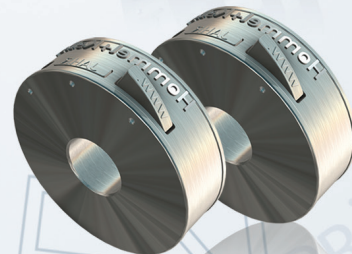
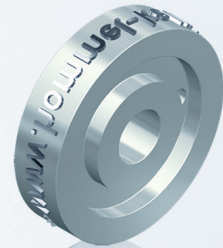
### EMBOSSING ROLLS

Embossing of bar stock.

### EMBOSSING DRUMS

Embossing and printing of various materials, such as leather and textiles.

Embossing drums are provided with raised or recessed lettering, as needed.



# STAMPS

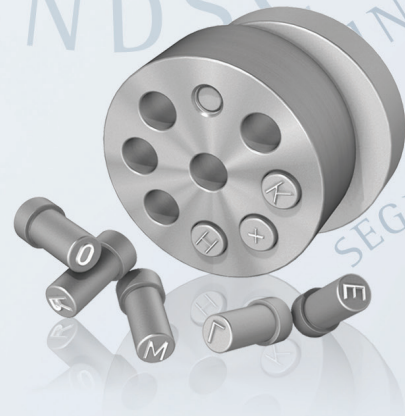
The texts/symbols are applied in mirror image and are then legible after being stamped into the material. Your individual logos and symbols are manufactured exactly to your specifications.



In comparison with hand stamps, the machine stamps are designed on the shank end with a journal or threads for mounting on the machine. Our machine stamps are hardened and tempered to suit the application. Production is based on your requirements and drawings.



The segment stamps are manufactured individually to customer specifications.



Individual marking of your products by cold or warm stamping.





## zeus® ENGRAVING TECHNOLOGY

# EMBOSSING DIES

### BLIND AND RELIEF STAMPS

Surface embossing of various materials for the final touch.  
Our blind and relief stamps will give your paper, cardboard, leather or wood products that something extra to make them stand apart.

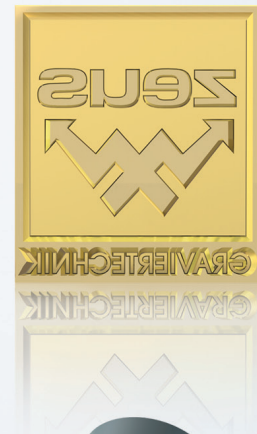
### SHEET METAL STAMPS

The sheet metal stamp consists of a top and bottom die and is suitable for raised or recessed embossing of sheet metal.

### PRINTING PLATES

Printing plates or paper embossing tools made of brass for finishing your products.

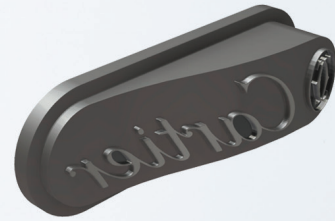
Give your high-quality packages/products an exquisite finish.  
We manufacture printing plates and embossing tools that are exactly customized for your requirements.



**zeus® ENGRAVING TECHNOLOGY**

## SPECIAL ENGRAVING

For marking of complex surfaces we will be glad to develop an individual solution. Based on your data and drawings we will develop and deliver the right tool, also for exceptionally complex applications.



We look forward to your challenges.

Please address inquiries to:

**Phone: +49 (0) 74 24 / 97 05-0**

**E-mail: [info@hommel-keller.de](mailto:info@hommel-keller.de)**