



zeus **Burnishing Tool**

– 2nd generation –

easy handling | reliable | surfaces up to $< R_z 1\mu\text{m}$





Burnishing Tool SET 510



Product features

- Fixed tool head
- New entry-level model for simple burnishing applications, e.g. for burnishing shafts with cylindrical surfaces
- Tool universally applicable
- Compact design - developed for Swiss type lathes
- Center height at middle of the shank
- Long tool life of the diamond burnishing tip due to eightfold change of tip position

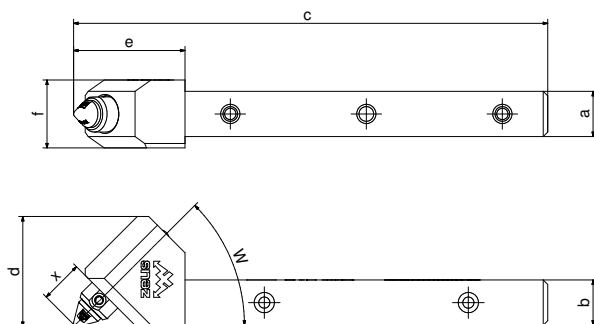
Recommendations

- Burnishing speed up to 200 m/min
- Feed rate up to 0.2 mm/U
- Material allowance of 0.01 mm (~Rz 10) and 0.02 mm (~Rz 20)
- For an optimum result it is recommended to use a cooling lubricant

TOOL VERSIONS:

Item no.	Tool holder model	Head angle	Basic shaft [mm]	Dimensions [mm]							Including shank adapter [mm]
				a	b	c	d	e	f	x	
31003955	510-10	35°	10 x 10	10	10	113	22	28	15	9.5	12 x 12 16 x 16
31003956	510-10	45°	10 x 10	10	10	104.6	24	24.6	15	9.5	12 x 12 16 x 16

Sets delivered without diamond burnishing tip



DIAMOND BURNISHING TIP VERSIONS:

Item no.	Tip radii [mm]
06TGW0008	0.4
06TGW0009	0.6
06TGW0010	0.8
06TGW0011	1.0
06TGW0007	2.0





Burnishing Tool SET 520



Product features

- Tool head is variably adjustable
- Tool universally applicable
- Swivel range $\pm 90^\circ$
- Thanks to the adjustability of the tool head, it is possible to burnish end face, conical, convex and concave geometries
- Application up to a shoulder
- Long tool life of the diamond burnishing tip due to eightfold change of tip position

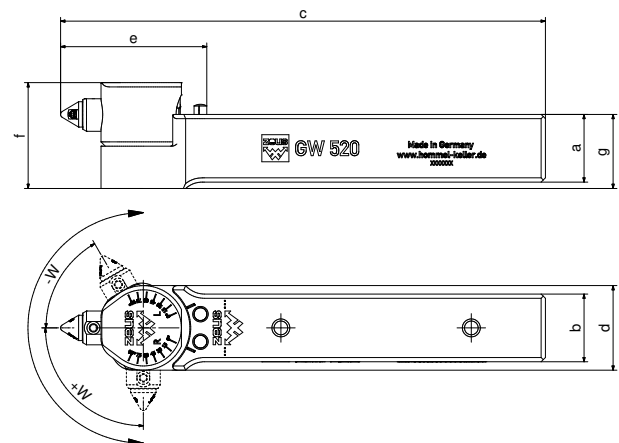
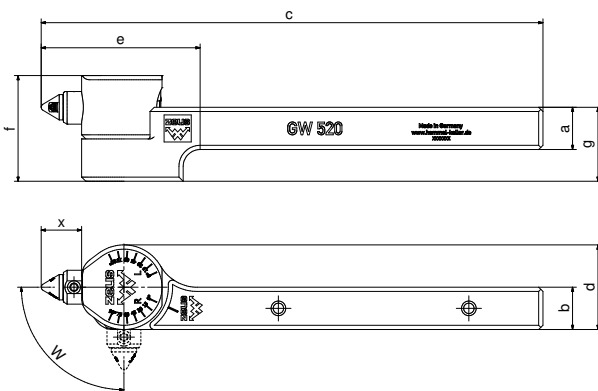
Recommendations

- Burnishing speed up to 200 m/min
- Feed rate up to 0.2 mm/U
- Material allowance 0.01 mm ($\sim R_z 10$) and 0.02 mm ($\sim R_z 20$)
- For an optimum result it is recommended to use a cooling lubricant

TOOL VERSIONS:

Item no. (right-hand version)	Item no. (left-hand version)	Tool holder model	Basic shaft [mm]	Dimensions [mm]								Angle [°]		Including shank adapter [mm]
				a	b	c	d	e	f	g	x	+W	-W	
31003922	31013577	520-10	10 x 10	10	10	118.5	20	37.5	25	17.5	9.5	90	90	12 x 12 16 x 16
31003923		520-16	16 x 16	16	16	114.5	20	34.6	25	17.5	9.5	90	90	20 x 20 25 x 25

Sets delivered without diamond burnishing tip



DIAMOND BURNISHING TIP VERSIONS:

Item no.	Tip radii [mm]
06TGW0008	0.4
06TGW0009	0.6
06TGW0010	0.8
06TGW0011	1.0
06TGW0007	2.0





zeus burnishing tools

– 2. Generation –



**Entry-level model
for Swiss type lathes**



**Easy handling
due to the new
spring spoke system**



**Reliable burnishing process
due to the new
stabilized guidance axis**



**Long tool life of the diamond
burnishing tip due to
eightfold change of tip position**

**zeus – a brand of
Hommel+Keller**



PRÄZISIONSWERKZEUGE

Hommel+Keller
Präzisionswerkzeuge GmbH
78554 Aldingen · Germany
Tel. +49 7424 9705-0
info@hommel-keller.de
www.hommel-keller.de