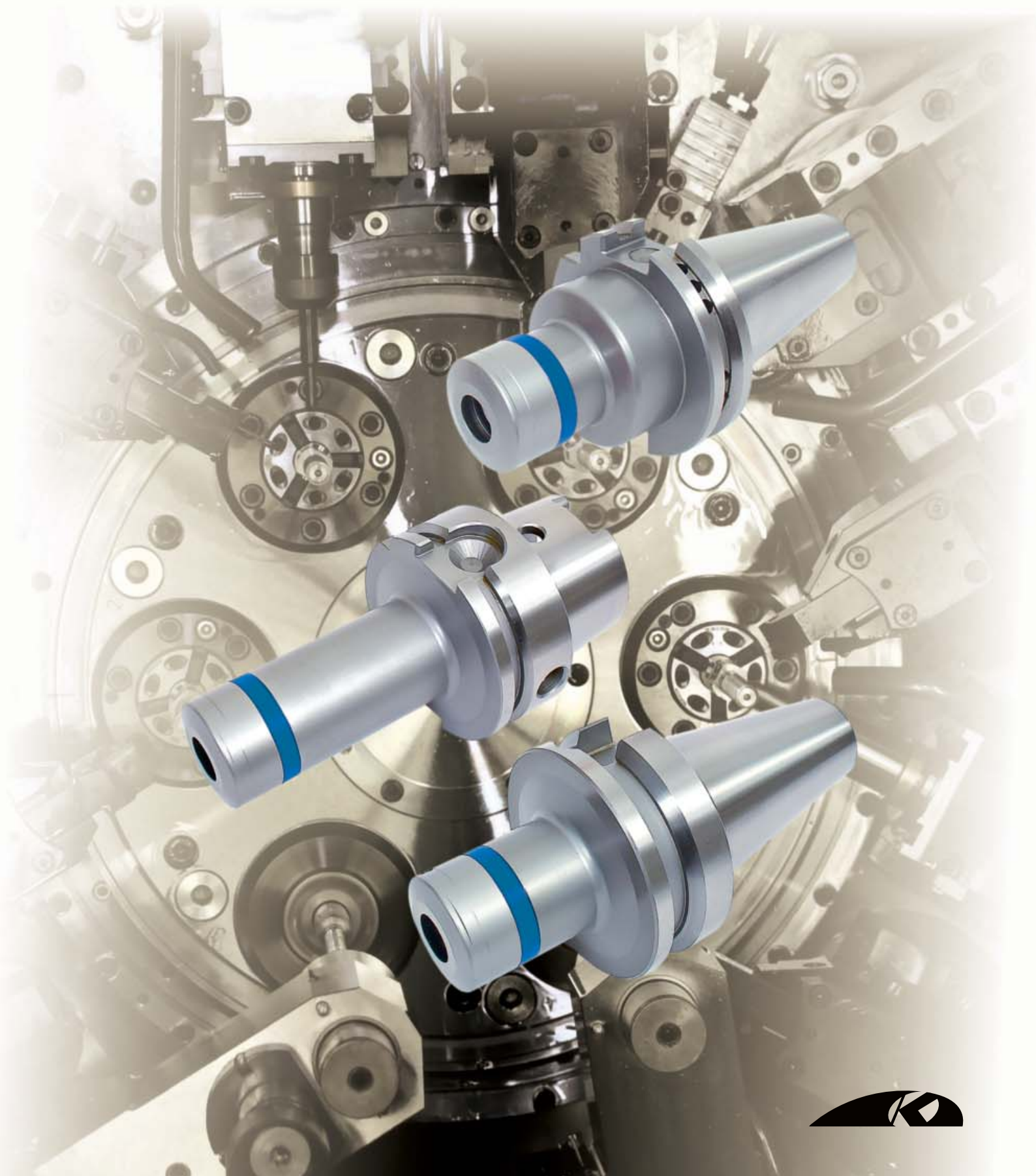


KINTEK

GREAT ACCURACY - HIGH PRECISION LINE



GREAT ACCURACY - HIGH PRECISION LINE



RUN OUT 5 MICRON at 2,5 times the diameter achieved only by using PRECISION ER collets
 The High level of accuracy is achieved either on the **NOMINAL DIAMETER** or by clamping the tool whose diameter is maximum 0,5 mm smaller than the nominal diameter.



5 MICRON RUNDLAUFGENAUIGKEIT bei 2,5 Mal des Durchmessers nur durch Verwendung von PRÄZISIONS-ER Spannzangen erreicht
 Das Erreichen der hohen Genauigkeit erfolgt entweder am **NENNDURCHMESSER** oder durch das Spannen des Werkzeuges, wessen Durchmesser maximal 0,5 mm kleiner als der Nenndurchmesser ist.



RUN OUT с 5 до 2,5 MICRON достигается только при использовании цанг PRECISION ER
 Высокий уровень точности достигается либо при зажиме **НОМИНАЛЬНОГО ДИАМЕТРА**, либо путем зажима инструмента, диаметр которого не должен превышать 0,5 мм номинального диаметра.



COAXIALITE 5 MICRON à 2,5 fois le diamètre obtenue uniquement en utilisant des pinces ER PRECISE
 Le haut niveau de précision est obtenu soit sur le **NOMINAL DIAMETER** soit en serrant l'outil dont le diamètre est au maximum 0,5 mm inférieur au diamètre nominal.



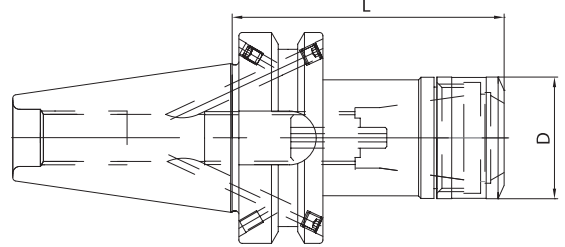
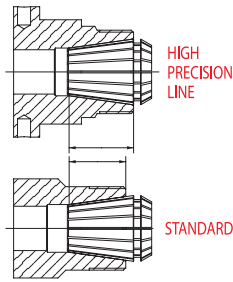
RUN OUT 5 MICRON a 2,5 il diametro garantito esclusivamente tramite pinze ER PRECISE
 L'elevata precisione si ottiene o sul **DIAMETRO NOMINALE** o chiudendo l'utensile con diametro al massimo di 0,5mm inferiore al diametro nominale.



配合使用高精度ER 夹头, 2.5 倍径 处的跳动精度可达到5 µ
 为达到高精度应夹持名义直径 或者小于名义直径不超过0,5mm的工具

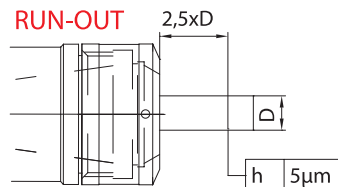
SPANNZANGENFUTTER ER TYP
ER COLLET CHUCK
ЦАНГОВЫЕ ПАТРОНЫ ER
MANDRINS A PINCES TYPE ER
MANDRINI PORTAPINZA TIPO ER
ER 弹簧夹头

DIN 6499



	Code N.	Description	ISO	L	D	ER	G2,5 20000
ISO 30	214-91473	BT30H70ER16-HP	30	70	30	16	•
	214-91474	BT30H70ER25-HP	30	70	40	25	•
	214-91475	BT30H70ER32-HP	30	70	50	32	•
ISO 40	214-91462	BT40H70ER16-HP	40	70	30	16	•
	214-91463	BT40H70ER25-HP	40	70	40	25	•
	214-91464	BT40H70ER32-HP	40	70	50	32	•
ISO 50	214-91465	BT50H80ER16-HP	50	80	30	16	•
	214-91476	BT50H80ER25-HP	50	80	40	25	•
	214-91466	BT50H80ER32-HP	50	80	50	32	•
ISO 40	214-91467	BT40H100ER16-HP	40	100	30	16	•
	214-91469	BT40H100ER25-HP	40	100	40	25	•
	214-91470	BT40H100ER32-HP	40	100	50	32	•
ISO 50	214-91471	BT50H100ER16-HP	50	100	30	16	•
	214-91477	BT50H100ER25-HP	50	100	40	25	•
	214-91472	BT50H100ER32-HP	50	100	50	32	•

Zubehör
Accessories
Accessoires
Accessori
Принадлежности
零件



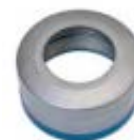
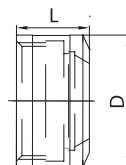
SPANNSCHLÜSSEL FÜR SPANNMUTTER
WRENCHES FOR NUT
КЛЮЧИ ДЛЯ СТАНДАРТНЫХ ГАЕК
CLES DE SERRAGE POUR ECROU
CHIAVI PER GHIERA
标准螺母用扳手

Code N.	D	D1	ER
816-203069	30	3	16
816-203070	40	4	25
816-203071	50	4	32



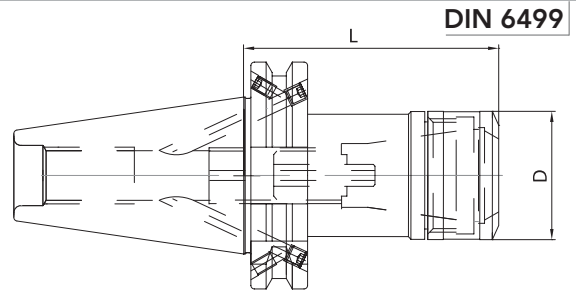
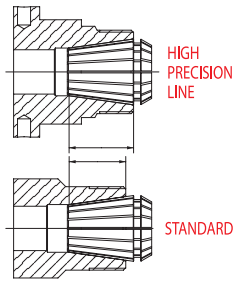
ER TYP SPANNZANGEN
COLLETS ER TYPE
НАБОРЫ ЦАНГ ER
PINCES TYPE ER
PINZE TIPO ER
ER 类型的夹头

Code N.	D	L	ER
812-203085	30	18	16
812-203086	40	20,5	25
812-203087	50	23,5	32



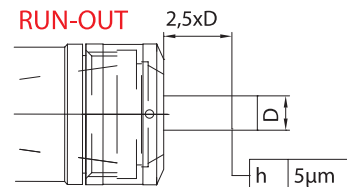
SPANNZANGENFUTTER ER TYP
ER COLLET CHUCK
ЦАНГОВЫЕ ПАТРОНЫ ER

MANDRINS A PINCES TYPE ER
MANDRINI PORTAPINZA TIPO ER
ER 弹簧夹头



	Code N.	Description	ISO	L	D	ER	G2,5 20000
ISO 40	214-91355	TC40H70ER16-HP	40	70	30	16	•
	214-91356	TC40H70ER25-HP	40	70	40	25	•
	214-91357	TC40H70ER32-HP	40	70	50	32	•
ISO 50	214-91358	TC50H70ER16-HP	50	70	30	16	•
	214-91366	TC50H70ER25-HP	50	70	40	25	•
	214-91359	TC50H70ER32-HP	50	70	50	32	•
ISO 40	214-91360	TC40H100ER16-HP	40	100	30	16	•
	214-91362	TC40H100ER25-HP	40	100	40	25	•
	214-91363	TC40H100ER32-HP	40	100	50	32	•
ISO 50	214-91364	TC50H100ER16-HP	50	100	30	16	•
	214-91367	TC50H100ER25-HP	50	100	40	25	•
	214-91365	TC50H100ER32-HP	50	100	50	32	•

Zubehör
Accessories
Accessoires
Accessori
Принадлежности
零件



SPANNSCHLÜSSEL FÜR SPANNMUTTER
WRENCHES FOR NUT
КЛЮЧИ ДЛЯ СТАНДАРТНЫХ ГАЕК

CLES DE SERRAGE POUR ECROU
CHIAVI PER GHIERA
标准螺母用扳手

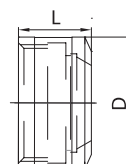
Code N.	D	D1	ER
816-203069	30	3	16
816-203070	40	4	25
816-203071	50	4	32



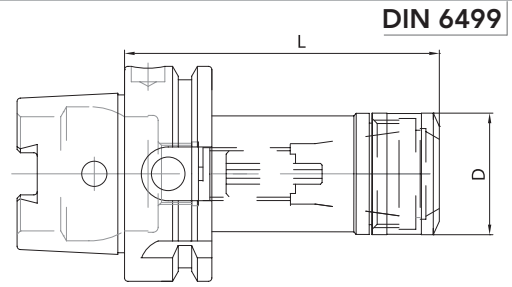
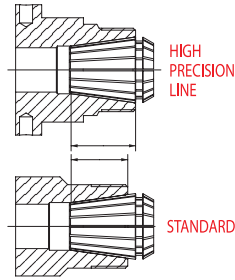
ER TYP SPANNZANGEN
COLLETS ER TYPE
НАБОРЫ ЦАНГ ER

PINCES TYPE ER
PINZE TIPO ER
ER 类型的夹头

Code N.	D	L	ER
812-203085	30	18	16
812-203086	40	20,5	25
812-203087	50	23,5	32

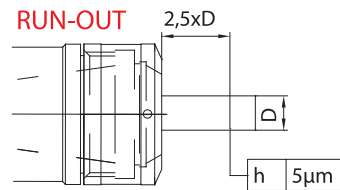


SPANNZANGENFUTTER ER TYP
ER COLLET CHUCK
ЦАНГОВЫЕ ПАТРОНЫ ER
MANDRINS A PINCES TYPE ER
MANDRINI PORTAPINZA TIPO ER
ER 弹簧夹头



Code N.	Description	HSK	L	D	ER	G2,5 20000
214-91747	HSK63AH75ER16-HP	63	75	30	16	•
214-91748	HSK63AH75ER25-HP	63	75	40	25	•
214-91749	HSK63AH75ER32-HP	63	75	50	32	•
214-91738	HSK63AH100ER16-HP	63	100	30	16	•
214-91739	HSK63AH100ER25-HP	63	100	40	25	•
214-91740	HSK63AH100ER32-HP	63	100	50	32	•
214-91742	HSK63AH160ER16-HP	63	160	30	16	•
214-91743	HSK63AH160ER25-HP	63	160	40	25	•
214-91744	HSK63AH160ER32-HP	63	160	50	32	•
214-91741	HSK100AH100ER32-HP	100	100	50	32	•
214-91750	HSK100AH160ER25-HP	100	160	40	25	•
214-91746	HSK100AH160ER32-HP	100	160	50	32	•

Zubehör
Accessories
Accessoires
Accessori
Принадлежности
零件



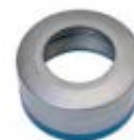
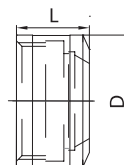
SPANNSCHLÜSSEL FÜR SPANNMUTTER
WRENCHES FOR NUT
КЛЮЧИ ДЛЯ СТАНДАРТНЫХ ГАЕК
CLES DE SERRAGE POUR ECROU
CHIAVI PER GHIERA
标准螺母用扳手

Code N.	D	D1	ER
816-203069	30	3	16
816-203070	40	4	25
816-203071	50	4	32



ER TYP SPANNZANGEN
COLLETS ER TYPE
НАБОРЫ ЦАНГ ER
PINCES TYPE ER
PINZE TIPO ER
ER 类型的夹头

Code N.	D	L	ER
812-203085	30	18	16
812-203086	40	20,5	25
812-203087	50	23,5	32

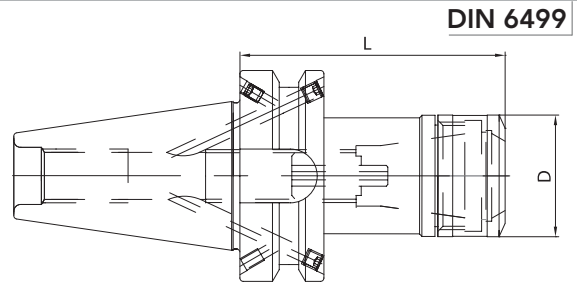
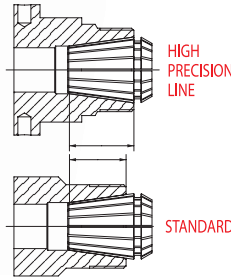


DOPPELKONTAKT AUFNAHMEN ER SPANNZANGENFUTTER
 DOUBLE CONTACT ER COLLET CHUCK
 ЦАНГОВЫЙ ПАТРОН ER С ДВОЙНЫМ КОНТАКТОМ

MADRINS DOUBLE CONTACT PORTE-PINCE ER
 MANDRINI PORTAPINZA A DOPPIO CONTATTO TIPO ER
 ER双向夹头



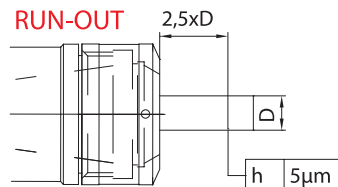
DOUBLE CONTACT



DIN 6499

	Code N.	Description	ISO	L	D	ER	G2,5 20000
ISO 30	214-37231	BT30H70ER16-HPDK	30	70	30	16	•
	214-37232	BT30H70ER25-HPDK	30	70	40	25	•
	214-37233	BT30H70ER32-HPDK	30	70	50	32	•
ISO 40	214-37219	BT40H70ER16-HPDK	40	70	30	16	•
	214-37220	BT40H70ER25-HPDK	40	70	40	25	•
	214-37221	BT40H70ER32-HPDK	40	70	50	32	•
ISO 40	214-37222	BT40H100ER16-HPDK	40	100	30	16	•
	214-37223	BT40H100ER25-HPDK	40	100	40	25	•
	214-37224	BT40H100ER32-HPDK	40	100	50	32	•
ISO 50	214-37225	BT50H80ER16-HPDK	50	80	30	16	•
	214-37226	BT50H80ER25-HPDK	50	80	40	25	•
	214-37227	BT50H80ER32-HPDK	50	80	50	32	•
ISO 50	214-37228	BT50H100ER16-HPDK	50	100	30	16	•
	214-37229	BT50H100ER25-HPDK	50	100	40	25	•
	214-37230	BT50H100ER32-HPDK	50	100	50	32	•

Zubehör
 Accessories
 Accessoires
 Accessori
 Принадлежности
 零件



SPANNSCHLÜSSEL FÜR SPANNMUTTER
 WRENCHES FOR NUT
 КЛЮЧИ ДЛЯ СТАНДАРТНЫХ ГАЕК

CLES DE SERRAGE POUR ECROU
 CHIAVI PER GHIERA
 标准螺母用扳手

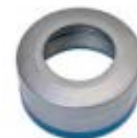
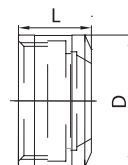
Code N.	D	D1	ER
816-203069	30	3	16
816-203070	40	4	25
816-203071	50	4	32



ER TYP SPANNZANGEN
 COLLETS ER TYPE
 НАБОРЫ ЦАНГ ER

PINCES TYPE ER
 PINZE TIPO ER
 ER类型的夹头

Code N.	D	L	ER
812-203085	30	18	16
812-203086	40	20,5	25
812-203087	50	23,5	32



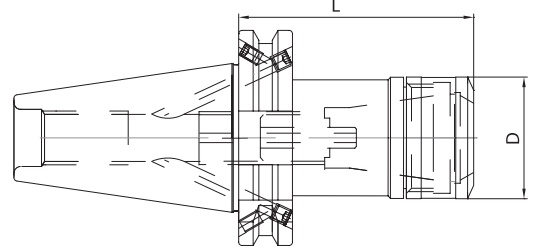
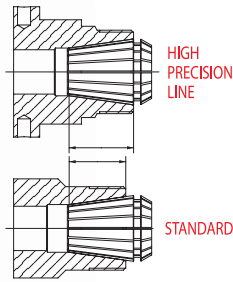
DOPPELKONTAKT AUFNAHMEN ER SPANNZANGENFUßER
 DOUBLE CONTACT ER COLLET CHUCK
 ЦАНГОВЫЙ ПАТРОН ER С ДВОЙНЫМ КОНТАКТОМ

MADRINS DOUBLE CONTACT PORTE-PINCE ER
 MANDRINI PORTAPINZA A DOPPIO CONTATTO TIPO ER
 ER双向夹头

DIN 6499

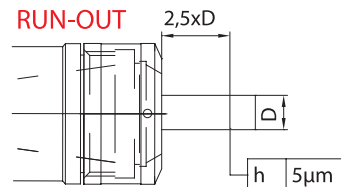


DOUBLE CONTACT



	Code N.	Description	ISO	L	D	ER	G2,5 20000
ISO 40	214-37115	TC40H70ER16-HPDK	40	70	30	16	•
	214-37116	TC40H70ER25-HPDK	40	70	40	25	•
	214-37117	TC40H70ER32-HPDK	40	70	50	32	•
ISO 40	214-37118	TC40H100ER16-HPDK	40	100	30	16	•
	214-37119	TC40H100ER25-HPDK	40	100	40	25	•
	214-37120	TC40H100ER32-HPDK	40	100	50	32	•
ISO 50	214-37121	TC50H80ER16-HPDK	50	80	30	16	•
	214-37122	TC50H80ER25-HPDK	50	80	40	25	•
	214-37123	TC50H80ER32-HPDK	50	80	50	32	•
ISO 50	214-37124	TC50H100ER16-HPDK	50	100	30	16	•
	214-37125	TC50H100ER25-HPDK	50	100	40	25	•
	214-37126	TC50H100ER32-HPDK	50	100	50	32	•

Zubehör
 Accessories
 Accessoires
 Accessori
 Принадлежности
 零件



SPANNSCHLÜSSEL FÜR SPANNMUTTER
 WRENCHES FOR NUT
 КЛЮЧИ ДЛЯ СТАНДАРТНЫХ ГАЕК

CLES DE SERRAGE POUR ECROU
 CHIAVI PER GHIERA
 标准螺母用扳手

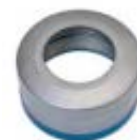
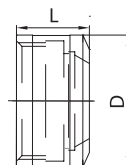
Code N.	D	D1	ER
816-203069	30	3	16
816-203070	40	4	25
816-203071	50	4	32



ER TYP SPANNZANGEN
 COLLETS ER TYPE
 НАБОРЫ ЦАНГ ER

PINCES TYPE ER
 PINZE TIPO ER
 ER 类型的夹头

Code N.	D	L	ER
812-203085	30	18	16
812-203086	40	20,5	25
812-203087	50	23,5	32





HEAD OFFICE

KINTEK S.R.L. - MAPPANO - TORINO - ITALY



NEW PRODUCTION PLANT

A.M.T S.R.L. - CASELLE T.SE - TORINO - ITALY



MAIN PRODUCTION PLANT

KINTEK TOOLING KFT - BEKESCSABA - HUNGARY



VIA GORETTA 88/G - 10072 MAPPANO
FRAZIONE DI CASELLE (TO) - ITALIA
Tel. +39.011.9968065 - Fax +39.011.9965662
<http://www.kintek.it> - e-mail: info@kintek.it