

**New**

## Turning Holder

Stable clamping with Double clamp system

# Double Clamp Holder

### Features

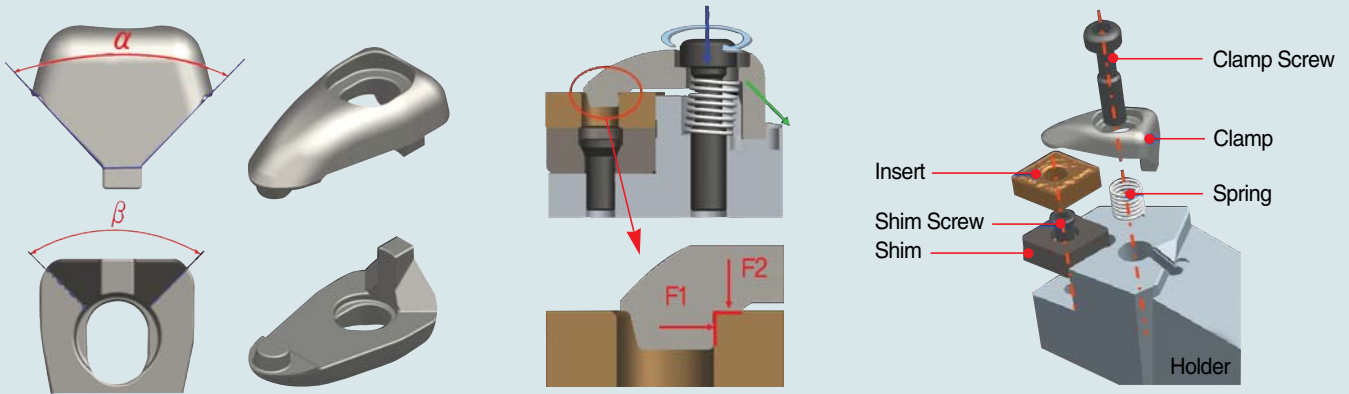
- Simple and powerful clamping system operated by only clamp screw
- Powerful two ways clamping system (upper and internal) is suitable for machining in very tough cutting conditions
- When assembled with holder it can be set precisely due to the special rear of clamp
- Stable structure design and high quality clamp ensure durability at frequent insert change.
- Compact and optimized design for avoiding chip interference and powerful clamping.



# Double Clamp Holder

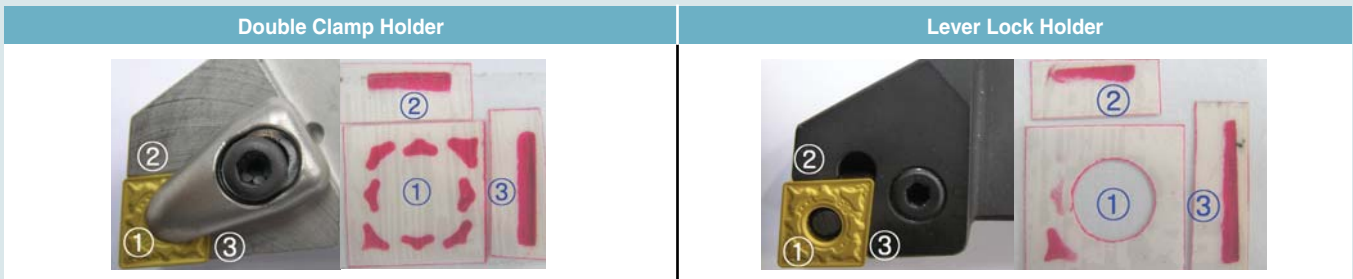
Features | Effect

## Features



## Effect

### Stable clamping



※ Powerful two ways clamping system pushes insert to both bottom and sides tightly.

### Improving cutting performance

Double Clamp Holder 35min Cutting	Lever Lock Holder 35min Cutting

Rmax	Rz	Ra	Rmax	Rz	Ra
4.4	4.1	0.6	5.5	5.1	0.7

#### Cutting condition

- Insert : CNMG120408-VM
- Workpiece : SCM440(4 grooves)
- Cutting speed : 200 m/min
- Depth of cut : 2.0mm
- Feed : 0.157 mm/rev

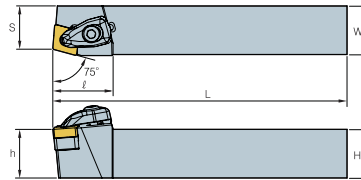
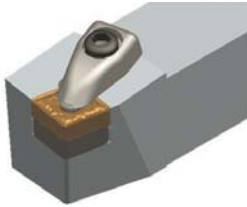
- ※ Ensures stable tool life at interrupted cutting condition due to powerful clamping
- ※ Reducing micro vibration shows better surface finish than conventional tools.

# Double Clamp Holder

DCBNR/L | DCLNR/L



## DCBNR/L

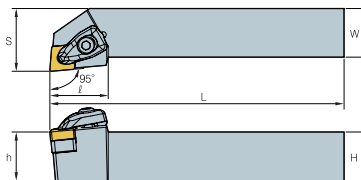


Designation	Stock		Dimensions(mm)						Insert
	R	L	H	W	L	S	h	ℓ	
<b>DCBNR/L 2020-K12</b>	○	○	20	20	125	17	20	31	CN □□1204 □□
<b>2525-M12</b>	○	○	25	25	150	22	25	31	
<b>3225-P12</b>	○	○	32	25	170	22	32	31	
<b>4040-S25</b>	○	○	40	40	250	35	40	50	CN □□2509 □□
<b>4040-S25-5</b>	○	○	40	40	250	35	40	50	CN □□2507 □□

•Only shim can be replaced : 4040-S25 and 4040-S25-5

●Stock item, ○Under preparing for stock

## DCLNR/L



Designation	Stock		Dimensions(mm)						Insert
	R	L	H	W	L	S	h	ℓ	
<b>DCLNR/L 2020-K12</b>	●	●	20	20	125	25	20	30	CN □□1204 □□
<b>2525-M12</b>	●	●	25	25	150	32	25	30	
<b>3225-P12</b>	○	○	32	25	170	32	32	30	
<b>3232-P12</b>	○	○	32	32	170	40	32	30	CN □□2509 □□
<b>4040-S25</b>	○	○	40	40	250	50	40	50	
<b>5050-T25</b>	○	○	50	50	300	60	50	50	
<b>4040-S25-5</b>	○	○	40	40	250	50	40	50	CN □□2507 □□
<b>5050-T25-5</b>	○	○	50	50	300	60	50	50	

•Only shim can be replaced : 4040-S25 and 4040-S25-5 / 5050-T25 and 5050-T25-5

●Stock item, ○Under preparing for stock

### DCBNR/L Parts

Insert	Clamp	Clamp screw	Shim	Shim screw	Spring	Wrench
CN □□1204 □□	CVH4	CHX0518	SC44V	FTKA0410	SPR0714	HW30L
CN □□2507 □□	CVH8	CHX0835	SC84V	FTKA0612	SPR1018	HW50L, TW25L
CN □□2509 □□	CVH8	CHX0835	SC83V	FTKA0612	SPR1018	HW50L, TW25L

### DCLNR/L Parts

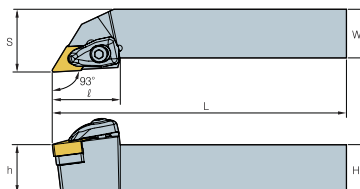
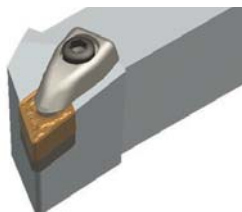
Insert	Clamp	Clamp screw	Shim	Shim screw	Spring	Wrench
CN □□1204 □□	CVH4	CHX0518	SC44V	FTKA0410	SPR0714	HW30L
CN □□2507 □□	CVH8	CHX0835	SC84V	FTKA0612	SPR1018	HW50L, TW25L
CN □□2509 □□	CVH8	CHX0835	SC83V	FTKA0612	SPR1018	HW50L, TW25L



# Double Clamp Holder

DDJNR/L | DSBNR/L

## DDJNR/L

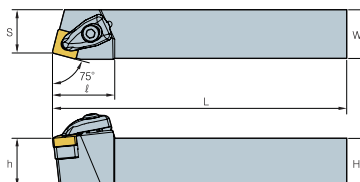
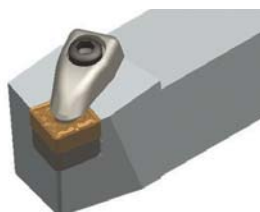


Designation	Stock		Dimensions(mm)						Insert
	R	L	H	W	L	S	h	ℓ	
DDJNR/L 2020-K15	○	○	20	20	125	25	20	35	DN □□1506 □□
2525-M15	●	●	25	25	150	32	25	35	
3225-P15	○	○	32	25	170	32	32	35	
3232-P15	○	○	32	32	170	40	32	35	
2020-K15-3	○	○	20	20	125	25	20	35	DN □□1504 □□
2525-M15-3	○	○	25	25	150	32	25	35	
3232-P15-3	○	○	32	32	170	40	32	35	

• Only shim can be replaced : 2020-K15 and 2020-K15-3 / 2525-M15 and 2525-M15-3 / 3232-P15 and 3232-P15-3

● Stock item, ○ Under preparing for stock

## DSBNR/L



Designation	Stock		Dimensions(mm)						Insert
	R	L	H	W	L	S	h	ℓ	
DSBNR/L 2020-K12	○	○	20	20	125	17	20	32	SN □□1204 □□
2525-M12	○	○	25	25	150	22	25	32	
3225-P12	○	○	32	25	170	22	32	32	
3232-P12	○	○	32	32	170	27	32	32	
4040-S25-6	○	○	40	40	250	35	40	51	SN □□2509 □□
5050-T25-6	○	○	50	50	300	43	50	51	
4040-S25	○	○	40	40	250	35	40	51	SN □□2507 □□
5050-T25	○	○	50	50	300	43	50	51	

• Only shim can be replaced : 4040-S25 and 4040-S25-6 / 5050-T25 and 5050-T25-6

● Stock item, ○ Under preparing for stock

### DDJNR/L Parts

Insert	Clamp	Clamp screw	Shim	Shim screw	Spring	Wrench
DN □□1504 □□	CVH4	CHX0518	SD44V	FTKA0410	SPR0714	HW30L
DN □□1506 □□	CVH4	CHX0518	SD43V	FTKA0410	SPR0714	HW30L
-	-	-	-	-	-	-

### DSBNR/L Parts

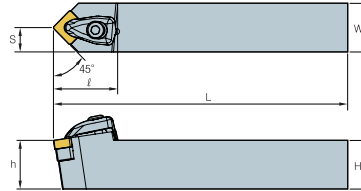
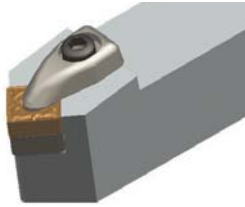
Insert	Clamp	Clamp screw	Shim	Shim screw	Spring	Wrench
SN □□1204 □□	CVH4	CHX0518	SS44V	FTKA0410	SPR0714	HW30L
SN □□2507 □□	CVH8	CHX0835	SS84V	FTKA0612	SPR1018	HW50L, TW25L
SN □□2509 □□	CVH8	CHX0835	SS83V	FTKA0612	SPR1018	HW50L, TW25L



# Double Clamp Holder

DSDNN | DSKNR/L

## DSDNN

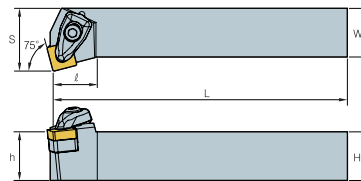
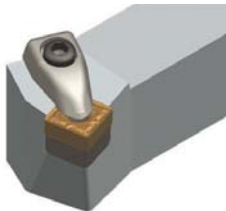


Designation	Stock	Dimensions(mm)						Insert
		H	W	L	S	h	ℓ	
DSDNN 2020-K12	○	20	20	125	10	20	33	SN □□1204 □□
2525-M12	○	25	25	150	12.5	25	33	
3225-P12	○	32	25	170	12.5	32	33	
3232-P12	○	32	32	170	16	32	33	
4040-S25-6	○	40	40	250	20	40	53	SN □□2509 □□
5050-T25-6	○	50	50	300	25	50	53	
4040-S25	○	40	40	250	20	40	53	SN □□2507 □□
5050-T25	○	50	50	300	25	50	53	

• Only shim can be replaced : 4040-S25 and 4040-S25-6 / 5050-T25 and 5050-T25-6

● Stock item, ○ Under preparing for stock

## DSKNR/L



Designation	Stock		Dimensions(mm)						Insert
	R	L	H	W	L	S	h	ℓ	
DSKNR/L 2020-K12	○	○	20	20	125	25	20	23	SN □□1204 □□
2525-M12	○	○	25	25	150	32	25	23	
3232-P12	○	○	32	32	170	40	32	23	
4040-S25-6	○	○	40	40	250	50	40	45	SN □□2509 □□
4040-S25	○	○	40	40	250	50	40	45	

• Only shim can be replaced : 4040-S25 and 4040-S25-6

● Stock item, ○ Under preparing for stock

### DSDNN Parts

Insert	Clamp	Clamp screw	Shim	Shim screw	Spring	Wrench
SN □□1204 □□	CVH4	CHX0518	SS44V	FTKA0410	SPR0714	HW30L
SN □□2507 □□	CVH8	CHX0835	SS84V	FTKA0612	SPR1018	HW50L, TW25L
SN □□2509 □□	CVH8	CHX0835	SS83V	FTKA0612	SPR1018	HW50L, TW25L

### DSKNR/L Parts

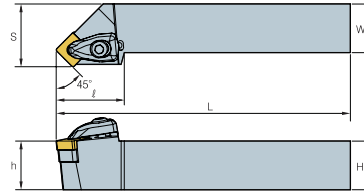
Insert	Clamp	Clamp screw	Shim	Shim screw	Spring	Wrench
SN □□1204 □□	CVH4	CHX0518	SS44V	FTKA0410	SPR0714	HW30L
SN □□2507 □□	CVH8	CHX0835	SS84V	FTKA0612	SPR1018	HW50L, TW25L
SN □□2509 □□	CVH8	CHX0835	SS83V	FTKA0612	SPR1018	HW50L, TW25L



# Double Clamp Holder

DSSNR/L | DWLNR/L

## DSSNR/L

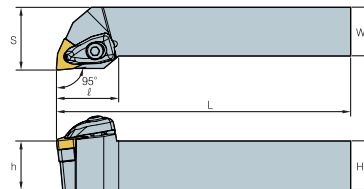
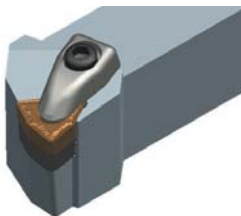


Designation	Stock		Dimensions(mm)						Insert
	R	L	H	W	L	S	h	ℓ	
<b>DSSNR/L 2020-K12</b>	○	○	20	20	125	25	20	35	SN □□1204 □□
<b>2525-M12</b>	○	○	25	25	150	32	25	35	
<b>3225-P12</b>	○	○	32	25	170	32	32	35	
<b>3232-P12</b>	○	○	32	32	170	40	32	35	SN □□2509 □□
<b>4040-S25-6</b>	○	○	40	40	250	50	40	53	
<b>4040-S25</b>	○	○	40	40	250	50	40	53	SN □□2507 □□

○ Only shim can be replaced : 4040-S25 and 4040-S25-6

● Stock item, ○ Under preparing for stock

## DWLNR/L



Designation	Stock		Dimensions(mm)						Insert
	R	L	H	W	L	S	h	ℓ	
<b>DWLNR/L 2020-K08</b>	○	○	20	20	125	25	20	32	WN □□0804 □□
<b>2525-M08</b>	●	○	25	25	150	32	25	32	

● Stock item, ○ Under preparing for stock

### DSSNR/L Parts

Insert	Clamp	Clamp screw	Shim	Shim screw	Spring	Wrench
SN □□1204 □□	CVH4	CHX0518	SS44V	FTKA0410	SPR0714	HW30L
SN □□2507 □□	CVH8	CHX0835	SS84V	FTKA0612	SPR1018	HW50L, TW25L
SN □□2509 □□	CVH8	CHX0835	SS83V	FTKA0612	SPR1018	HW50L, TW25L

### DWLNR/L Parts

Insert	Clamp	Clamp screw	Shim	Shim screw	Spring	Wrench
WN □□0804 □□	CVH4	CHX0518	SS44V	FTKA0410	SPR0714	HW30L
-	-	-	-	-	-	-
-	-	-	-	-	-	-



HEAD OFFICE  
 Holystar B/D 953-1, Doksanbon-Dong, Geumcheon-Gu, Seoul, Korea  
 TEL: +82 2 522 3181 FAX: +82 2 522 3184, +82 2 3474 4744  
 WEB: www.korloy.com

CHEONGJU FACTORY  
 53-16, Songjeong-Dong, Hungduk-Gu, Chengju, Chungcheongbuk-Do, Korea  
 TEL: +82 43 262 0141 FAX: +82 43 262 0146  
 E-MAIL: export@korloy.com

JINCHEON FACTORY  
 767-1, Gwanghyewon-Ri, Gwanghyewon-Myon, Jincheon-Gun, Chungcheongbuk-Do, Korea  
 TEL: +82 43 535 0141 FAX: +82 43 535 0144